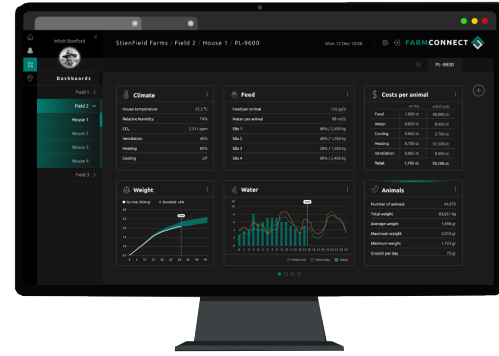


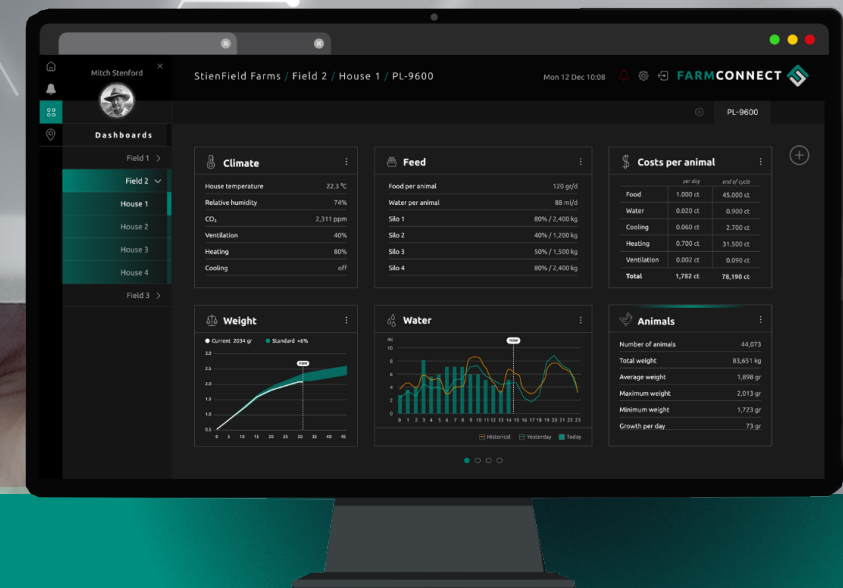
FARMCONNECT (optional)

The FarmConnect farm software collects all current and historical data of all control computers on your farm, combines this data, and then presents it in clear overviews, graphs and tables.

FarmConnect gives you access to your farm data. Wherever you are, you are always connected to your company so that you can intervene immediately if necessary.



XML-Export DATA



Create new insights

- Data from FarmConnect is exported to a legible file, an XML export file
- This XML export file can be provided to external parties to give them access to your house data
- External parties can convert the data into an overall overview

STIENEN AGRI AUTOMATION

Stienen is a leading family company (1977) which has its roots in livestock farming. It is in our nature to be very close to our end users. We are a global supplier of innovative automation solutions for poultry and pig houses. Our climate solutions, automation systems, management software and the accompanying peripheral equipment are all developed and produced in-house.

Stienen
Mangaanstraat 9 - 6031 RT Nederweert
T +31 (0)495 - 63 29 26
E sales@stienen.com
www.stienen.com

BIG DATA

Big data refers to the vast amount and variety of digital data which is stored worldwide and made available in 'real time'.

- Volume
- Velocity
- Variety

These are the three identifying characteristics of big data. There is a vast amount of data involved in livestock farming. Every partner in the value chain collects data.

DATA COLLECTION

The XML export file generated for you by Stienen using the FarmConnect data enables an external party to analyse and give you a transparent view of all your relevant farm data.

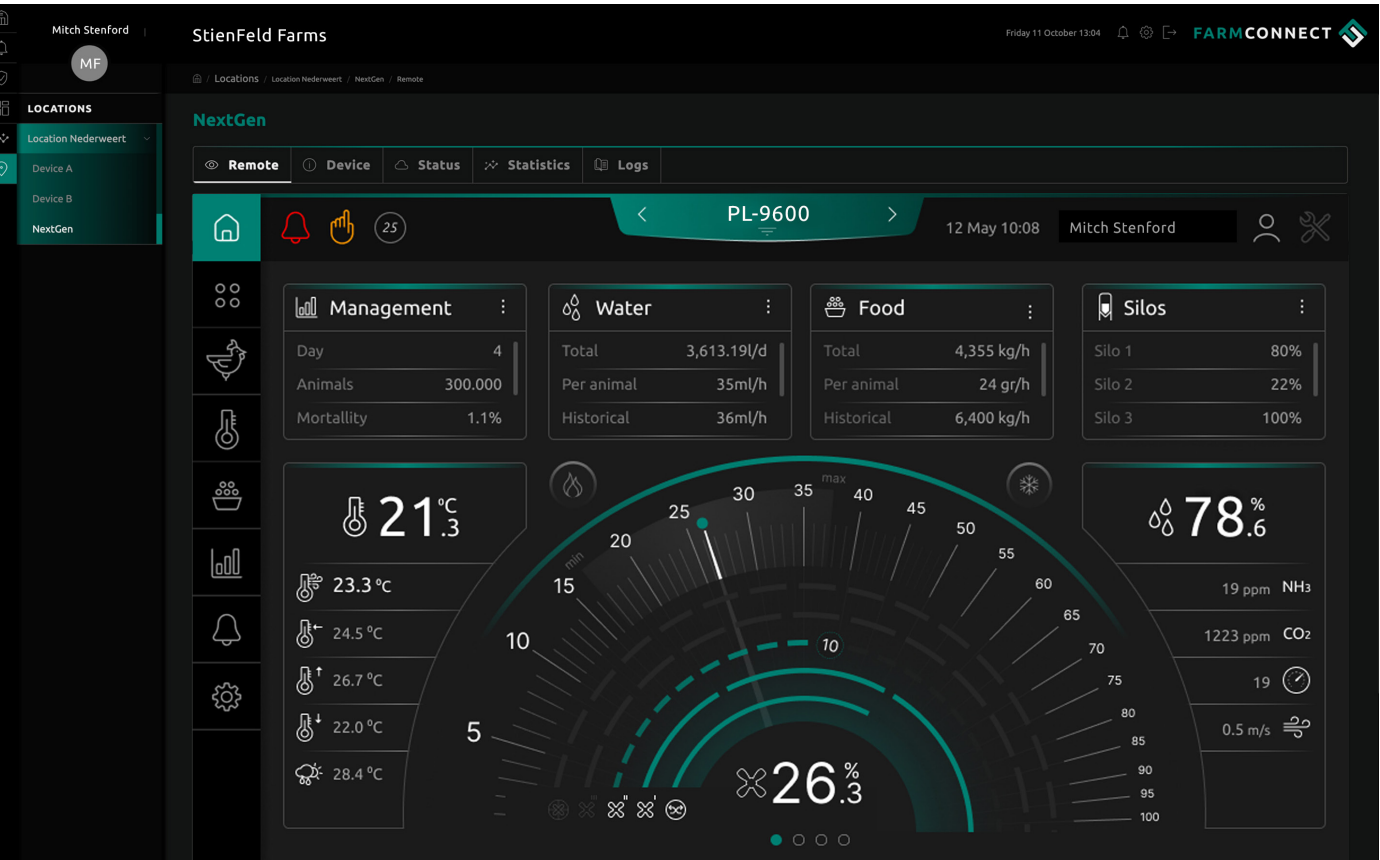
These analyses will help you make better decisions and optimise your performance.

- Overall view and control of all processes
- Manage growth
- Improve results

DATA EXCHANGE

Integrations are playing an ever more prominent role internationally and lead the way in more efficient integration of all processes.

Data exchange is the key component for enabling added value to be created for different users, from individual entrepreneurs to integrations and links in the chain.



VALUE CHAIN POULTRY

Feed mills, farms with parent and/or grandparent stock, hatcheries, broilers, transport companies, slaughterhouses, supermarkets and consumers.

They are all links in this value chain which produce important data. Looking at the data in the entire chain as a single aggregated entity enables new insights to be gained.

