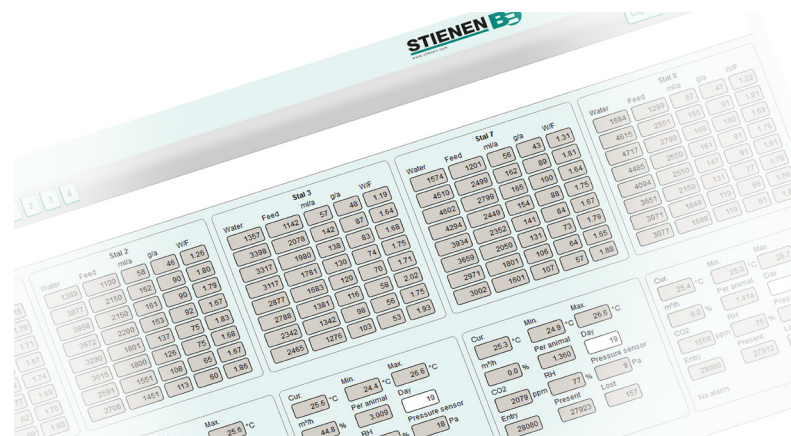




XML-EXPORT

Learning from data

- Data from FarmConnect is exported to a legible file, an XML export file
- This XML export file can be provided to external parties to give them access to your house data
- External parties can convert the data into an overall overview



Big Data

Big data refers to the vast amount and variety of digital data which is stored worldwide and made available in 'real time'. Volume, velocity and variety are the three identifying characteristics of big data. There is a vast amount of data involved in livestock farming. Every partner in the value chain collects data.

If we take the poultry chain as an example, partners include feed mills, farms with parent and/or grandparent stock, hatcheries, broilers, transport companies, slaughterhouses, supermarkets and consumers. They are all links in this value chain which produce important data. Looking at the data in the entire chain as a single aggregated entity enables new insights to be gained.

Data collection

You continue to be the owner of your own data

The XML export file generated for you by Stienen BE using the FarmConnect data enables an external party to analyse and give you a transparent view of all your relevant farm data. These analyses will help you make better decisions and optimise your performance.

- Overall view and control of all processes
- Manage growth
- Improve results

FarmConnect

FarmConnect is Stienen BE's management program, connecting you to all the Stienen management computers in your company day and night.

The program provides you with an up-to-date view of your animals' performance. You can study your animals' data at leisure via internet and compare it to the results of other houses or previous cycles.

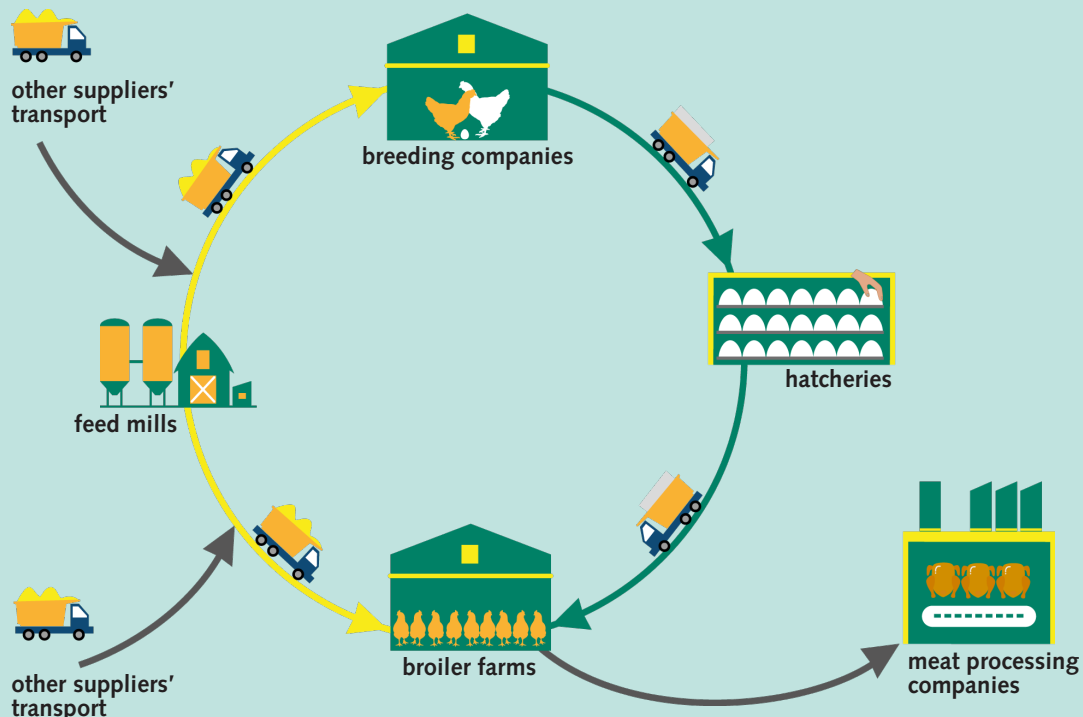
To enable enhanced management based on intended end result, the data from FarmConnect can be exported to an XML export file. All the information from your climate computer is exported to this file, enabling an external party to give you a comprehensive overview and help you get control of all processes.

Data exchange

This starts with your own data from your animal houses

Integrations are playing an ever more prominent role internationally and lead the way in more efficient integration of all processes.

Data exchange is the key component for enabling added value to be created for different users, from individual entrepreneurs to integrations and links in the chain.



Stienen BE, Agri Automation

Stienen BE is a leading family company (1977) which has its roots in livestock farming. It is in our nature to be very close to our end users. We are a global supplier of innovative automation solutions for poultry and pig houses. Our climate solutions, automation systems, management software and the accompanying peripheral equipment are all developed and produced in-house.