

ALTERNATIVES STW

ELM - Winch motor

The ELM motor has been specially developed to control various types of air inlets in intensive livestock buildings. The winch motor is fitted with a 230V motor with a tensile force of 335 to 800 kg, depending on the model.



EGM - Winch motor

A robust, brushless 24V motors with a tensile force of 100 and 250 kg respectively. As standard, the EGM series is supplied with a cable drum and is available with a 0-10V control signal or potentiometer feedback



STW

MOTOR GEARBOX



Motor with triple function

- Self-braking drive
- Low noise
- Maintenance free
- Cost efficient
- Powerful motor
- Standard double-axis

STIENEN AGRI AUTOMATION

Stienen is a leading family company (1977) which has its roots in livestock farming. It is in our nature to be very close to our end users. We are a global supplier of innovative automation solutions for poultry and pig houses. Our climate solutions, automation systems, management software and the accompanying peripheral equipment are all developed and produced in-house.

Stienen
Mangaanstraat 9 - 6031 RT Nederweert
T +31 (0)495 - 63 29 26
E sales@stienen.com
www.stienen.com

STIENEN 



STW-L-EN25011

STIENEN 

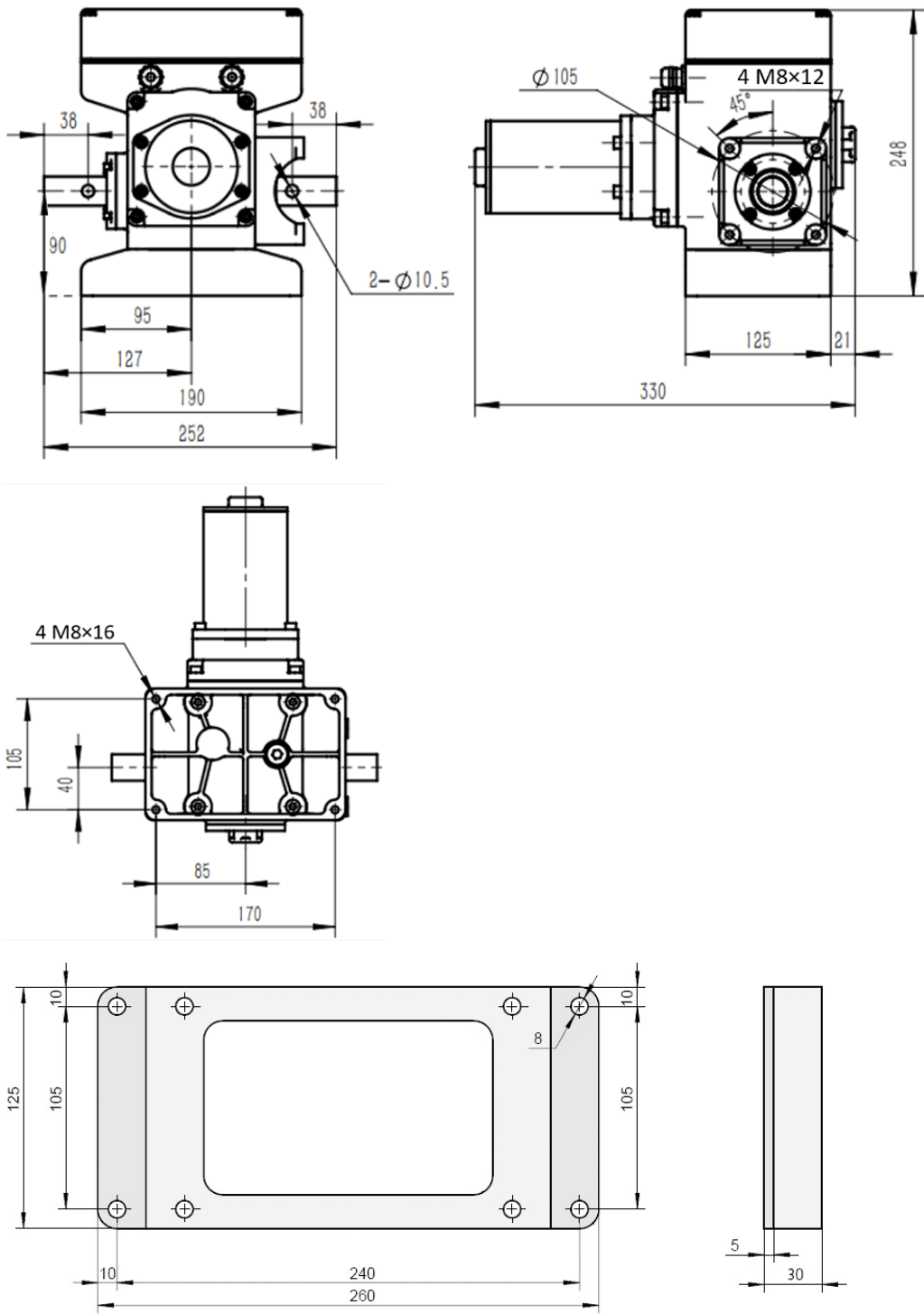
STW motor

Ventilation and temperature in your house are crucial for animal welfare. To control the curtain control, Stienen has developed a new motor : The STW.

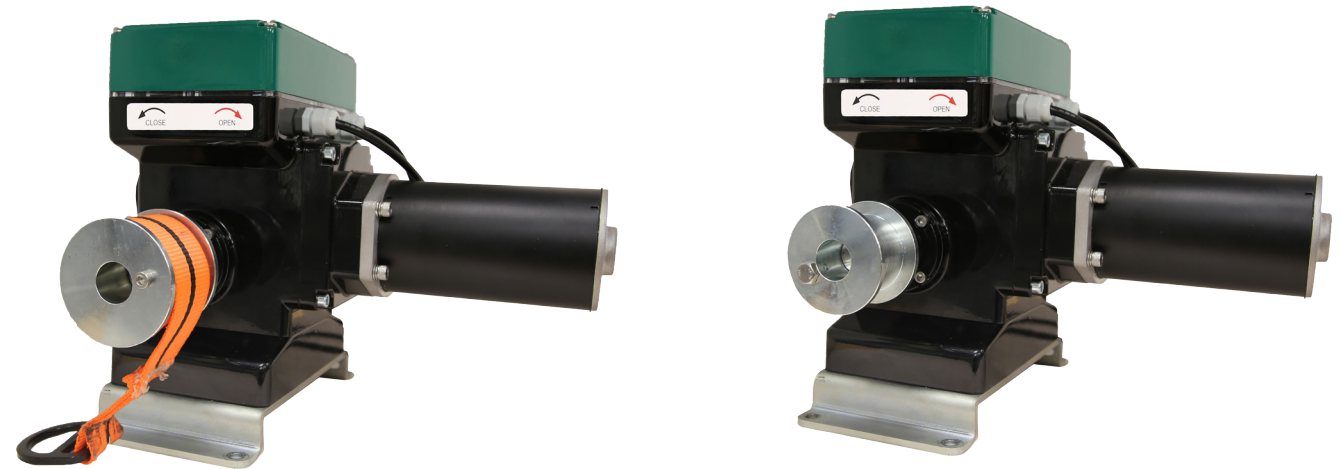
This motor controls accurately, is reliable and ensures smooth control.



DIMENSIONS STW



SPECIFICATIONS STW



	STW-300V-TB		STW-300C		STW-24V-300C	
Application	Valve control		Curtain control		Curtain control	
Standard included	1 x Strap drum + strap 1 x Mounting plate		1 x Cable drum 1 x Mounting plate		1 x Cable drum 1 x Mounting plate	
Optional	Chain Coupling		Chain Coupling		Chain Coupling	
Supply voltage	230VAC 50 Hz	60 Hz	230 VAC 50Hz	60 Hz	24VDC	
Power	2,0 A		2,0 A		6,0 A	
Weight	12 kg		12 kg		12 kg	
Torque	300 Nm		300 Nm		300 Nm	
Motor power	150 W		150 W		150 W	
Max. tensile force	500 kg		750kg *		500 kg	
Speed in RPM (with load)	1,4 rpm		1,4 rpm		1,4 rpm	
Range of limit switch	max. 6 rev.		max. 20 rev.		max. 20 rev.	
Max. duty cycle	35% max.25 min.		35% max. 25 min.		35% max. 25 min.	
Feedback potentiometer	10kΩ ±5%		10kΩ ±5%		10kΩ ±5%	
Length of connection cable	1m		1m		1m	
Operation temperature	-5....+52 °C		-5....+52 °C		-5....+52 °C	
Protection class	IP65		IP65		IP65	
Gear ratio **	Min. and max. stroke length (strap drum)	Min. - max. output shafts rotations	Min. and max stroke length (cable drum, 4mm cable)	Min.-max. output shafts rotations	Min. and max stroke length (cable drum, 4mm cable)	Min.-max. output shafts rotations
15/60			38-318cm	1,75-18	38-318cm	1,75-18
20/55	19-116cm	1-6	27-208cm	1,25-12	27-208cm	1,25-12
30/45	19-80cm	1-4,5	17-113cm	1-6,75	17-113cm	1-6,75
36/40	19-59cm	1-3,3	17-81cm	1-5	17-81cm	1-5
40/36	19-44cm	1-2,7	17-63cm	1-4	17-63cm	1-4
45/30	19-29cm	1-2	17-45cm	1-3	17-45cm	1-3

* The STW-300C (230V) may be loaded with 750 kg in total, divided over 2 axles. CAUTION : max. 500kg. per axle

** All gear ratios are included as standard.