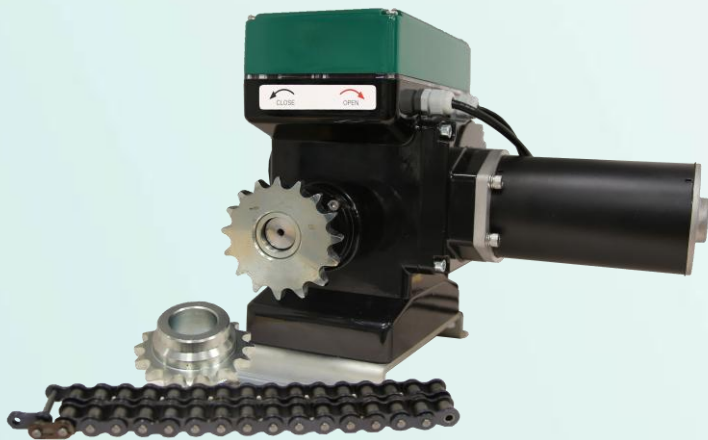


STW-300 Winch motor

VISUAL INSTALLATION GUIDE

STW-300-G-AL00002



Aansprakelijkheid/Liability/Haftung/Responsabilidad

NL Stienen BE aanvaardt geen enkele aansprakelijkheid voor de inhoud van dit document en wijst uitdrukkelijk alle impliciete garanties van verkoopbaarheid of geschiktheid voor een bepaald doel van de hand. Verder behoudt zich het recht voor, dit document te herzien of te wijzigen zonder de verplichting een persoon of organisatie van een dergelijke verbetering of wijziging in kennis te stellen.

EN Stienen BE accepts no liability for the contents of this manual and explicitly waives all implicit guarantees of merchantability or fitness for a certain use. Stienen BE also reserves the right to improve or change this manual without being under the obligation to inform any person or organisation of any such improvement or change.

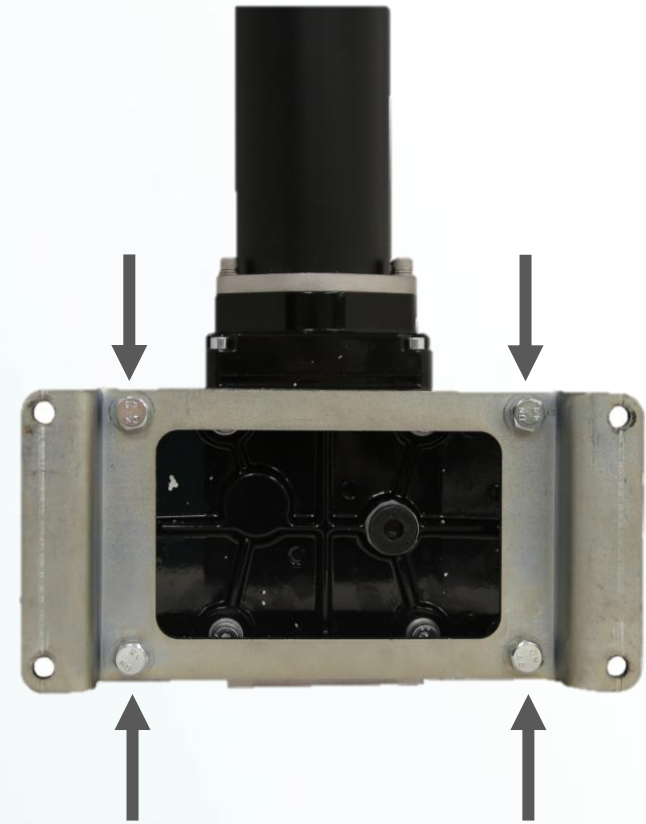
DE Stienen BE übernimmt keine Haftung für den Inhalt dieses Dokument und erteilt ausdrücklich keine implizierten Garantien bezüglich der Verkäuflichkeit oder der Eignung für einen bestimmten Zweck. Darüber hinaus behält sich Stienen BE das Recht vor, dieses Dokument zu überarbeiten oder zu ändern, ohne gleichzeitig verpflichtet zu sein, diesbezüglich eine Person oder eine Instanz über eine solche Verbesserung oder Änderung in Kenntnis zu setzen.

ES Stienen BE no aceptará ninguna clase de responsabilidad por el contenido de este manual y rechaza expresamente cualquier garantía implícita de comerciabilidad o idoneidad para un propósito determinado. Además, StienenBE se reservará el derecho a revisar o modificar este manual sin obligación de informar de dicha mejora o modificación a ninguna persona u organización.

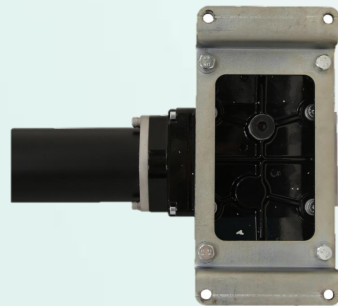
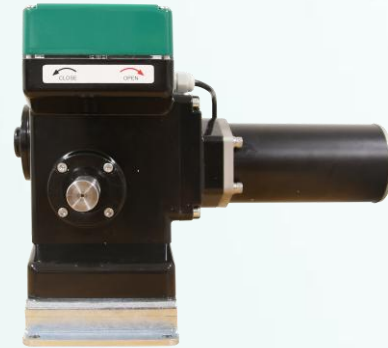
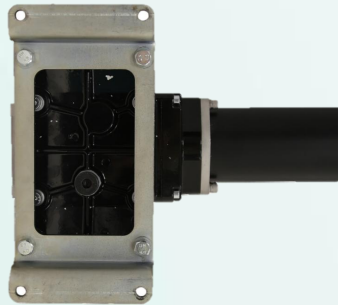
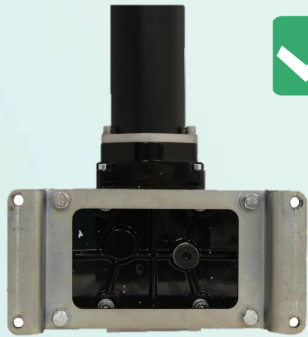
Mounting plate installation



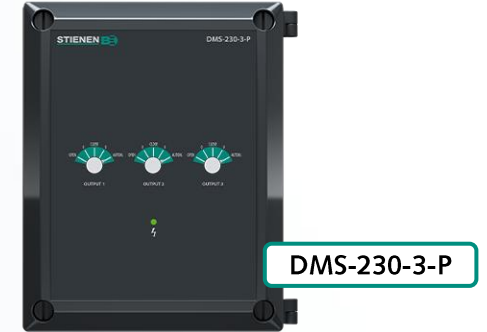
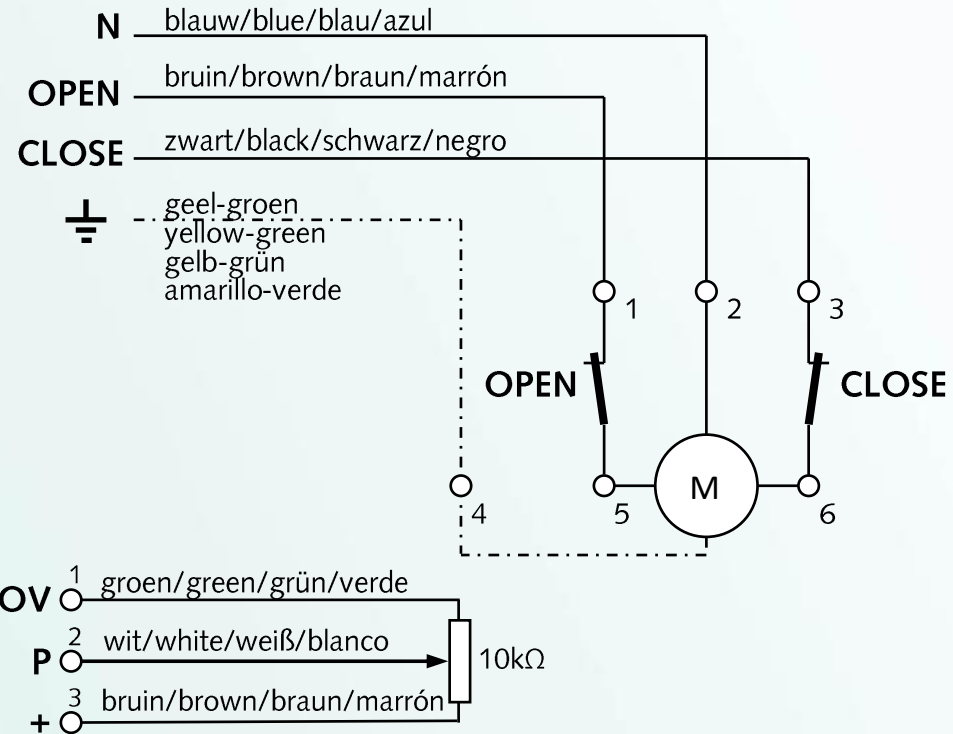
14 mm



Wall mounting position

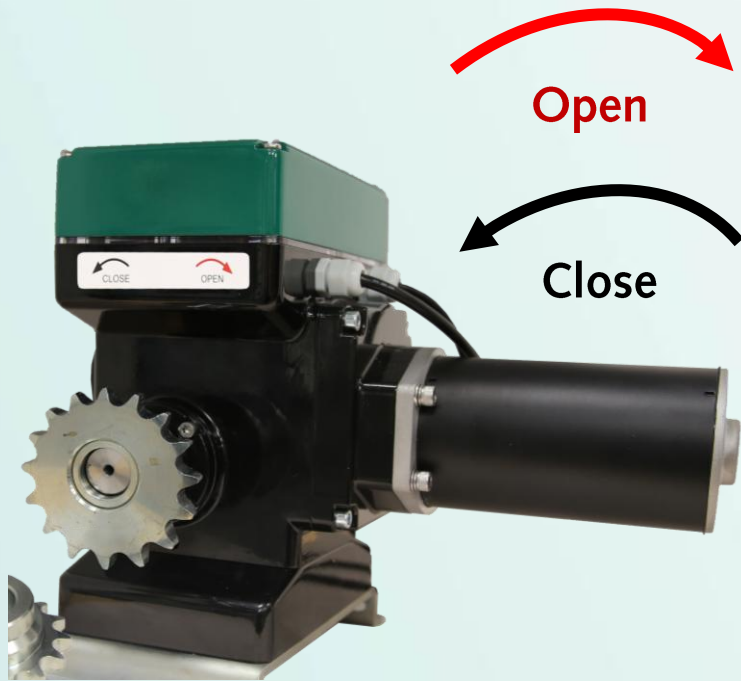


Electrical scheme

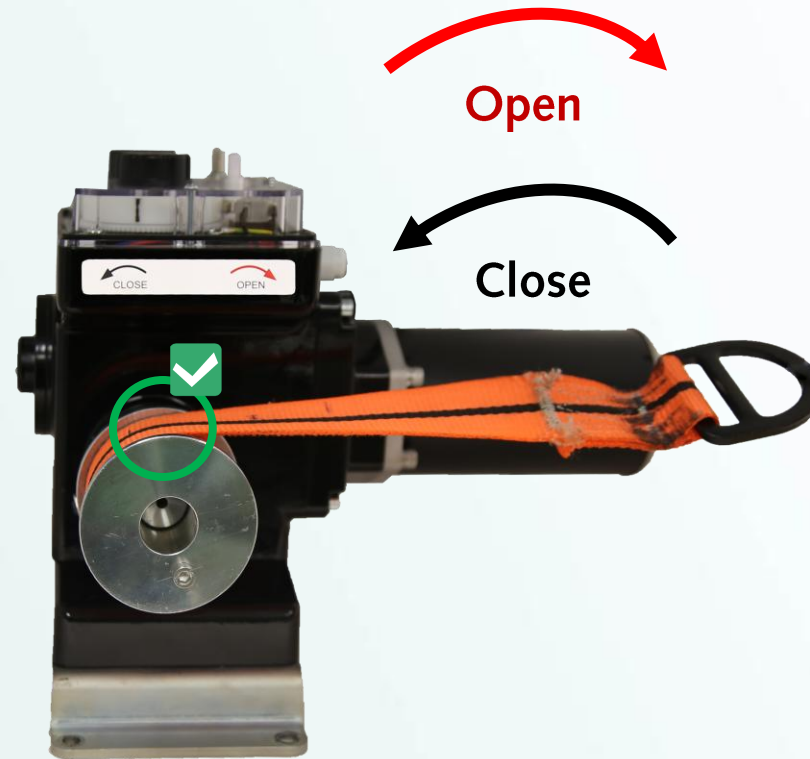


Geschikte eindstations / Compatible endstations / Kompatible Endstations

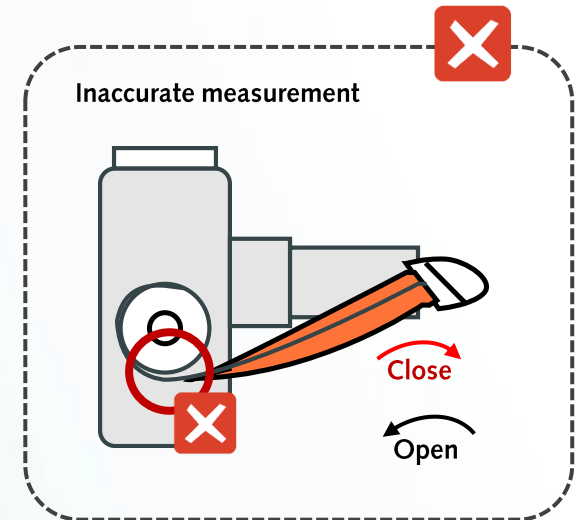
Direction of roll up



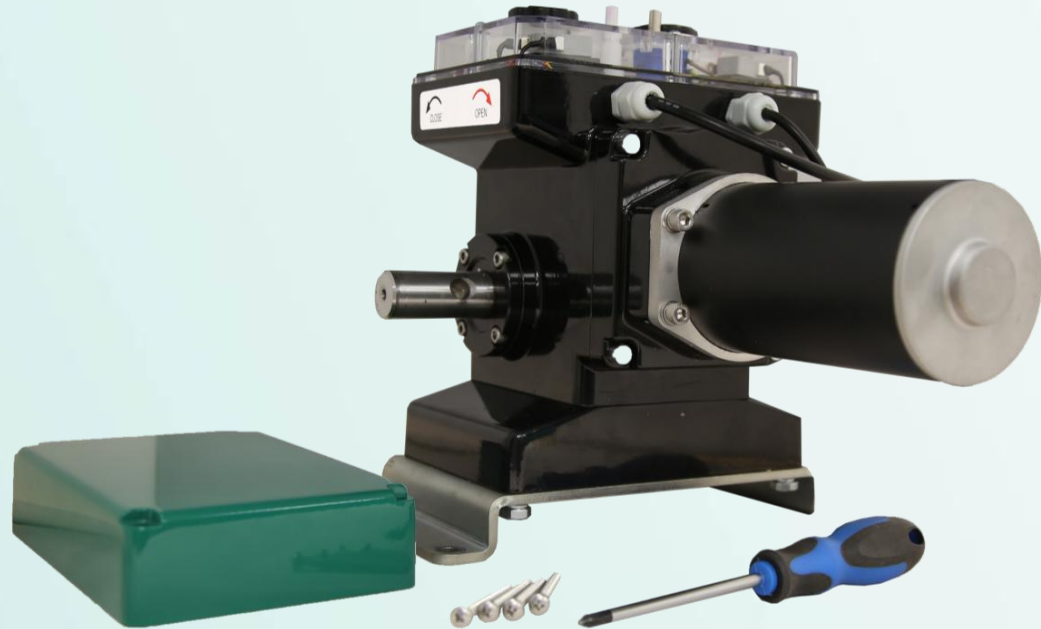
Curtain control (STW-C)



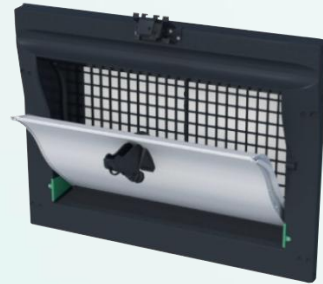
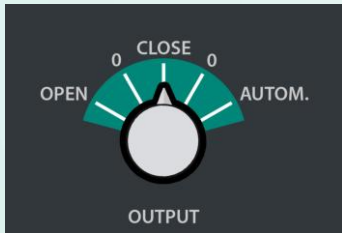
Valve control (STW-TB)



Limit switch adjustments

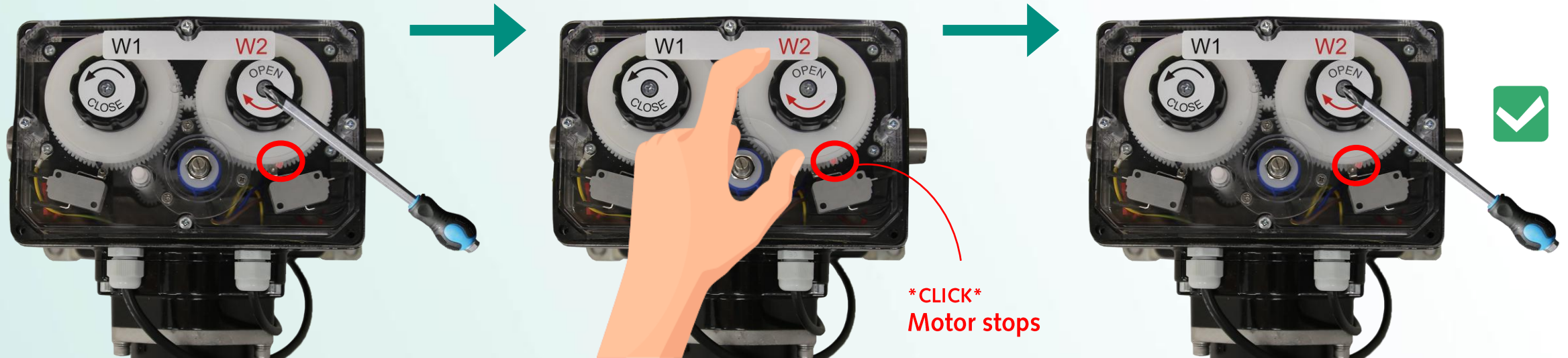
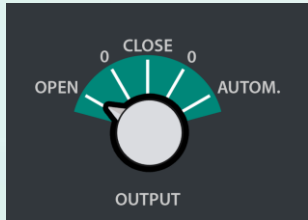


Adjust closed position



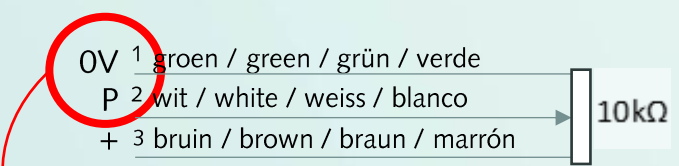
NL Om af te stellen eerst de middelste schroef losdraaien, dan afstellen en de middelste schroef weer vastdraaien /
EN To adjust first loosen the middle screw, then adjust and screw the middle screw tight again /
DE Zum Einstellen erst die mittlere Schraube lösen, dann einstellen und die mittlere Schraube wieder festdrehen

Adjust open position

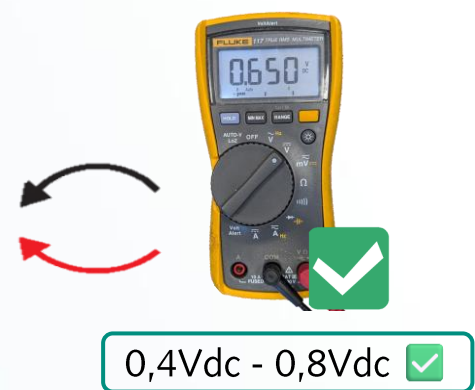
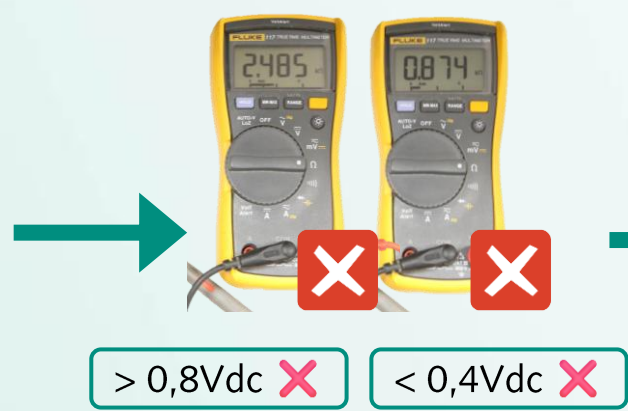


NL Om af te stellen eerst de middelste schroef losdraaien, dan afstellen en de middelste schroef weer vastdraaien /
 EN To adjust first loosen the middle screw, then adjust and screw the middle screw tight again /
 DE Zum Einstellen erst die mittlere Schraube lösen, dann einstellen und die mittlere Schraube wieder festdrehen

Potentiometer setting - close

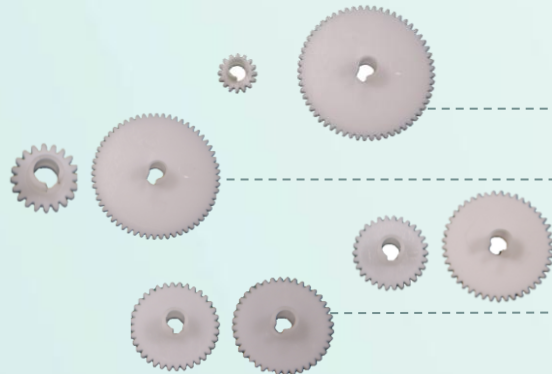
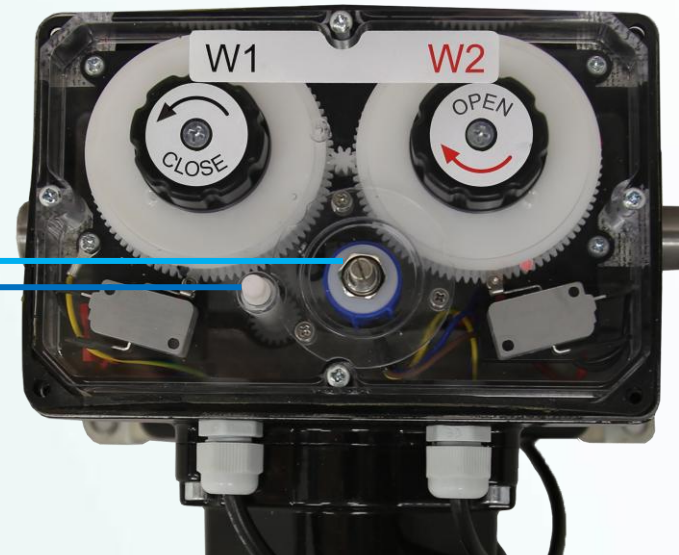


Measure Voltage between 0V(-) and P(+) on DMS



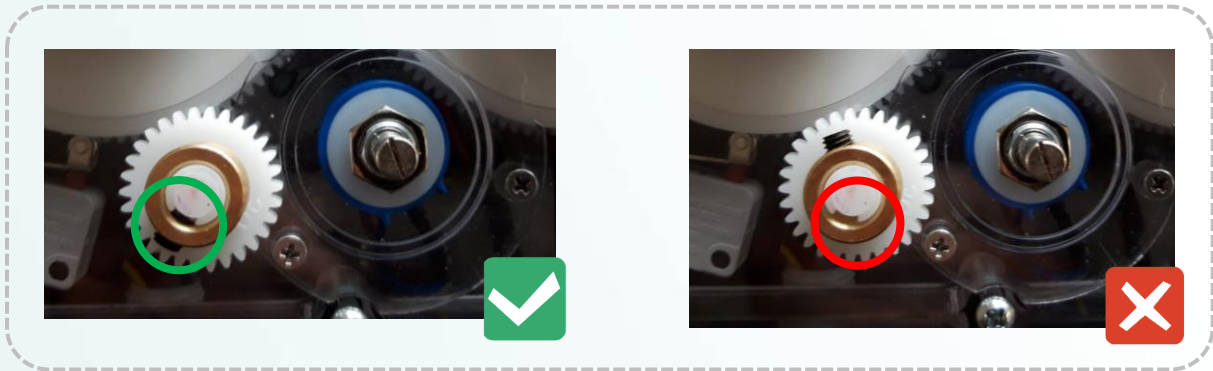
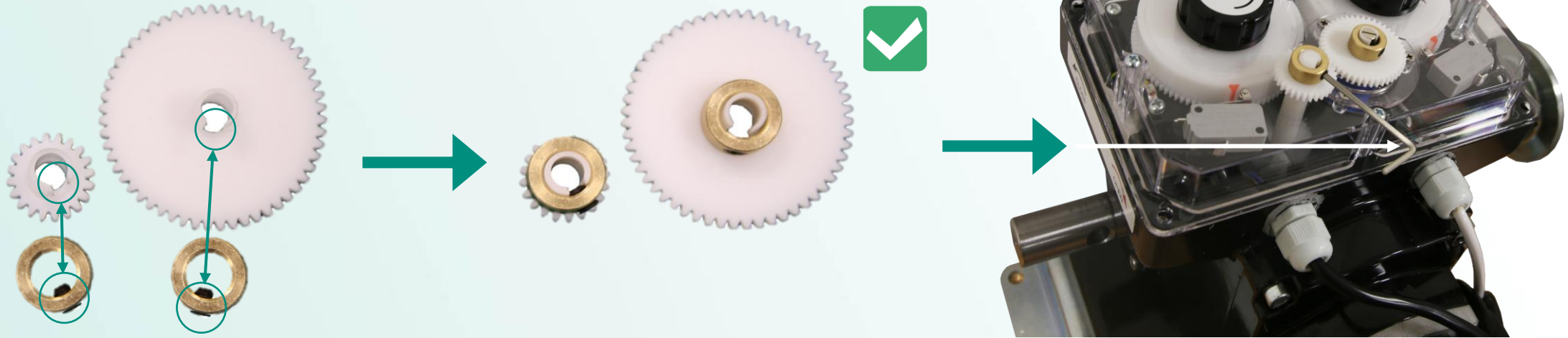
Potentiometer setting

Measure stroke length and select corresponding gears



| Model | | STW-300V-TB / 300V-TB-60 | | STW-300C | |
|-----------------------|----------------------------|-------------------------------------|--------------------------------|-------------------------------------|--------------------------------|
| Geared counting shaft | Geared potentiometer Shaft | Min. – Max. revolutions motor shaft | Min. – Max. stroke length (cm) | Min. – Max. revolutions motor shaft | Min. – Max. stroke length (cm) |
| 16 | 60 | | | 1,75 – 18 | 38 – 318 cm |
| 20 | 55 | 1 - 6 | 19.0 – 116.0 cm | 1,25 – 12 | 27 – 208 cm |
| 30 | 45 | 1 – 4,5 | 19.0 – 80.0 cm | 1 – 6,75 | 17 – 113 cm |
| 36 | 40 | 1 – 3,3 | 19.0 – 59.0 cm | 1 – 5 | 17 – 81 cm |
| 40 | 36 | 1 – 2,7 | 19.0 – 44.0 cm | 1 – 4 | 17 – 63 cm |
| 45 | 30 | 1 - 2 | 19.0 – 29.0 cm | 1 – 3 | 17 – 45 cm |

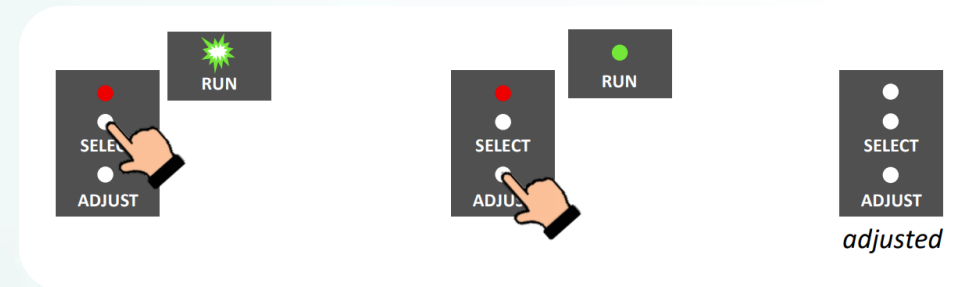
Potentiometer setting



Adjusting AUTOMATIC position



1. Press SELECT on the DMS to select the desired valve
2. Then press ADJUST to start automatic calibration
3. The air inlet will now fully open and close again.
4. If calibration is successful, the red LED above SELECT switches off. If the red LED above button SELECT flashes, calibration was not successful or there is an error situation. *Check the DMS manual: stienen.com > Login with your Partner Login > Download Center.*



Finish

