



The PL-9500 poultry management computer is part of a total solution for farm automation.

Our climate solutions and management systems fit together seamlessly. In this way we guarantee a customized solution, worldwide.



STIENEN AGRI AUTOMATION

Stienen BE is a leading family company (1977) which has its roots in livestock farming. It is in our nature to be very close to our end users. We are a global supplier of innovative automation solutions for poultry and pig houses. Our climate solutions, automation systems, management software and the accompanying peripheral equipment are all developed and produced in-house.

Stienen
Mangaanstraat 9 - 6031 RT Nederweert
T +31 (0)495 - 63 29 26
E sales@stienen.com
www.stienen.com

STIENEN 

PL-9500

BE IN TOUCH

Farm management

- Suitable for complete automation of any type of poultry house
- Graphic display of all important management information
- Clearly arranged dashboard with touch icons for direct navigation
- 3D house overview with measurement values, can be configured to your preference
- With skylight- / daylight control
- Can be programmed in various languages
- USB port for updating and logging
- Secured communication with FarmConnect and FarmRemote




PL-9500-L-EN25010

STIENEN 

In touch with your livestock

This super clear and user-friendly climate and management computer with touch screen is designed to be the interactive heart of each type of modern poultry farm.

The PL-9500 manages and controls the quality of life of animals in order to achieve optimal performance results.

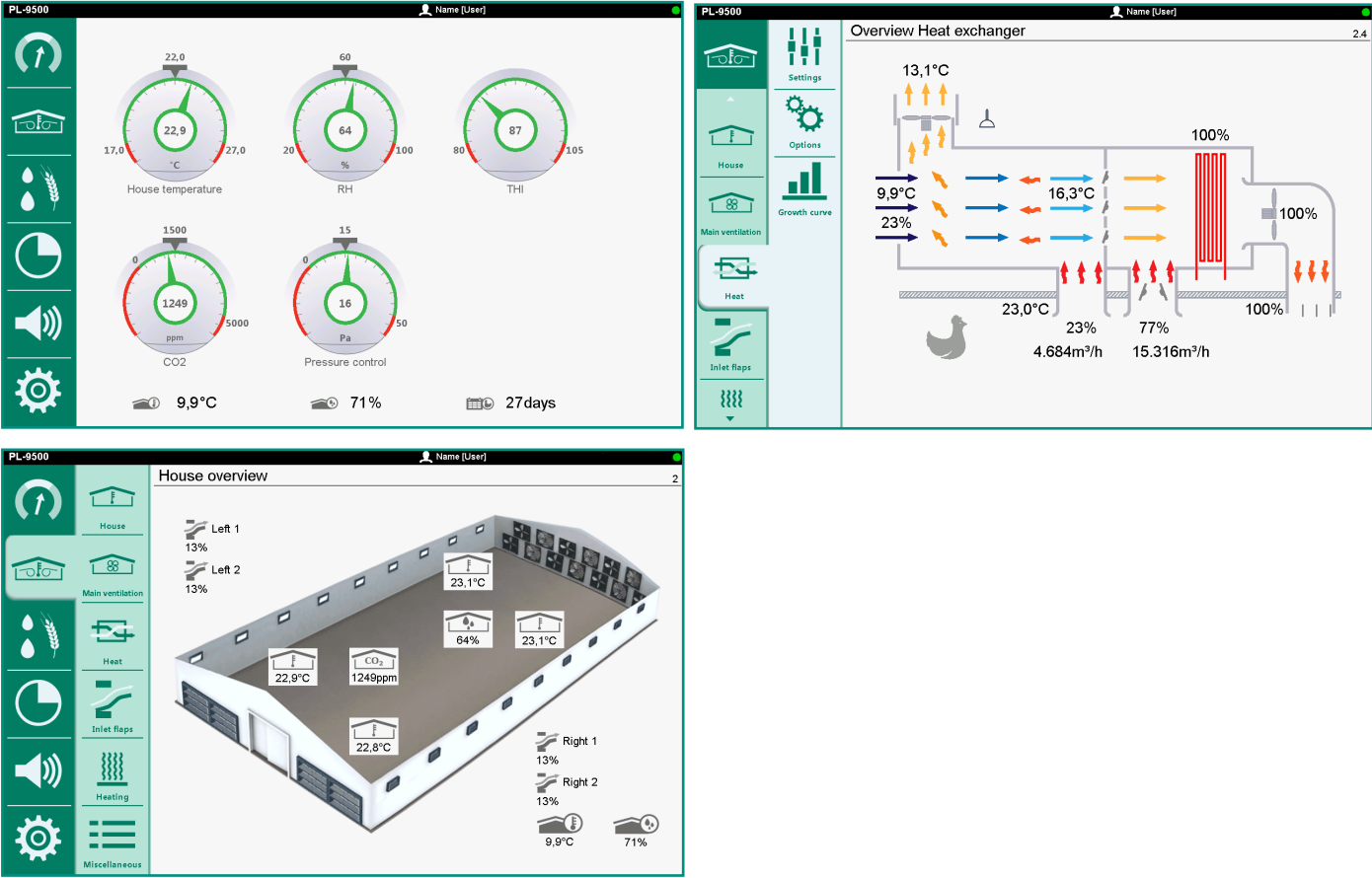


Overview

The climate and management computer collects all data from Stienen systems for life bird weighing, feed weighing, silo weighing, egg counting and heat exchangers and processes the data into comprehensible tables and graphs.

The graphical representation of parameters such as temperature, water, feed, weight, production, relative humidity (RH), light, carbon dioxide (CO2) and ammonia (NH3) provide you all the important management information at a glance.

Thanks to the crisp and modern user interface all vital processes in the poultry house can be controlled, monitored and managed easily.



SPECIFICATIONS PL-9500

STANDARD OPTIONS

Temperature sensors	10
Pulse inputs for counters, measuring fans etc.	5
Inputs 0-10Vdc for RH sensor, pressure sensor, etc.	4
Relay outputs 230Vac/2A	7
Outputs 0-10Vdc	8
Power supply 24Vdc/80mA for 1 AQC-unit	1
Power supply 12Vdc/15mA for measuring fans	1
Error contact 24Vdc/2A	v

EXTENSION OPTIONS

Communication via RS-485-print	v
Module bus connections for communication with external modules	3
Connection FN-bus	1

GENERAL

Power supply	230Vac - 50/60Hz
Load	48VA
Protection class	IP-54
Dimensions	370 x 320 x 160mm

FARMREMOTE (optional)

The remote control feature of the PL-9500 enables you to read the current data of your animal house remotely using your smartphone, tablet or PC. You can even operate the PL-9500 from the comfort of your armchair. The StienenWEB-SEC interface guarantees a secure connection.

FARMCONNECT (optional)

The FarmConnect farm software collects all current and historical data of all control computers on your farm, combines this data, and then presents it in clear overviews, graphs and tables. FarmConnect gives you access to your farm data. Wherever you are, you are always connected to your company so that you can intervene immediately if necessary.

