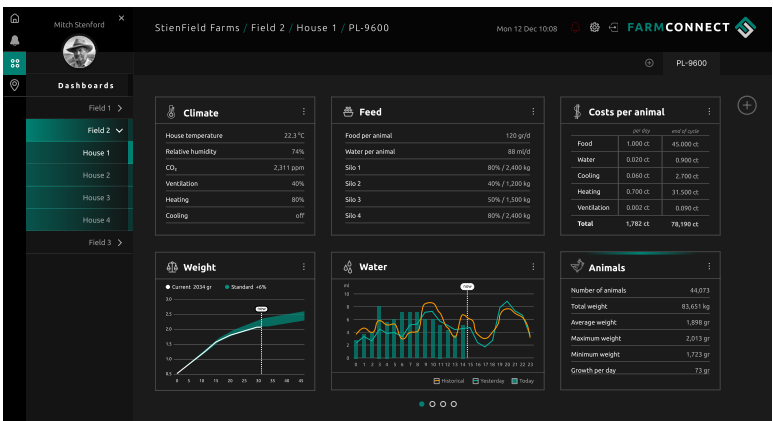


FARMCONNECT (optional)

The FarmConnect farm software collects all current and historical data of all control computers on your farm, combines this data, and then presents it in clear overviews, graphs and tables.

FarmConnect gives you access to your farm data. Wherever you are, you are always connected to your company so that you can intervene immediately if necessary.



PEC-SERIES EGG COUNTERS



Count accurately. Manage intelligently.

- Very high counting accuracy; one pulse per egg, no missed counts
- Suitable for belts up to 50 cm wide, flexible use in existing installations
- Stand-alone and connectable
- Direct insight into production; reliable data per belt or per house

STIENEN AGRI AUTOMATION

Stienen is a leading family company (1977) which has its roots in livestock farming. It is in our nature to be very close to our end users. We are a global supplier of innovative automation solutions for poultry and pig houses. Our climate solutions, automation systems, management software and the accompanying peripheral equipment are all developed and produced in-house.

Stienen
Mangaanstraat 9 - 6031 RT Nederweert
T +31 (0)495 - 63 29 26
E sales@stienen.com
www.stienen.com



PEC-serie-L-EN26010





PEC-SERIES

The PEC series egg counters offer maximum reliability in counting eggs.

Thanks to advanced technology, every egg is accurately registered, regardless of belt speed or production pressure.

Count accurately. Manage intelligently!



INNOVATIVE COUNTING

Thanks to its smart technology, the PEC series counts eggs with extreme accuracy, even at high belt speeds and during intensive production.

The counter is quick and easy to install above existing egg or conveyor belts, without the need for major modifications to the installation.

Clear status and output lights provide immediate visual control, so you can see at a glance that the counter is functioning correctly and that every egg is being registered.

The PEC series combines robust construction with a modern, low-maintenance design for long-lasting and reliable performance.



MANAGEMENT PL-9600

This management computer is designed to be the interactive heart of each type of modern poultry farm. This computer collects all data from Stienen systems for life bird weighing, feed weighing, silo weighing, egg counting and heat exchangers and processes this data into comprehensible tables and graphs.

The graphical representation of parameters such as water, temperature, feed, weight, production, relative humidity (RH), carbon dioxide (CO2) and ammonia (NH3) provide you all the important management information at a glance.

Thanks to the crisp and modern user interface all vital processes in the poultry house can be controlled, monitored and managed easily.

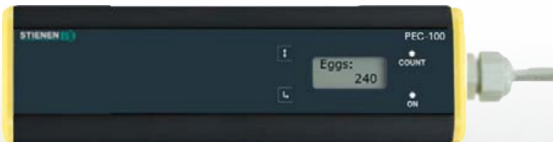
SPECIFICATIONS PEC-SERIES

GENERAL

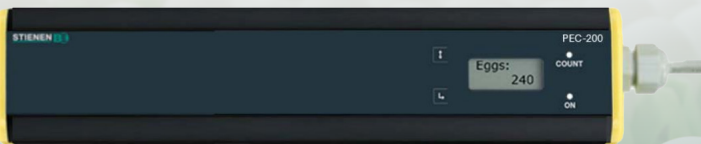
Digital output	Open Drain 24V/0.5A
Puls width	37.5 ms
Housing	IP52
Belt speed of conveyor	0-8m/min
Max. ambient temperature	+40°C
Min. ambient temperature	-5°C

	PEC-100	PEC-200	PEC-300	PEC-9650
Power consumption	max. 0,5W	max. 1,0W	max. 1,5W	max. 2,5W
Power supply	24VDC	24VDC	24VDC	24VAC
Scan width	100mm	200mm	300mm	500mm
Technology	laser	laser	laser	infrared

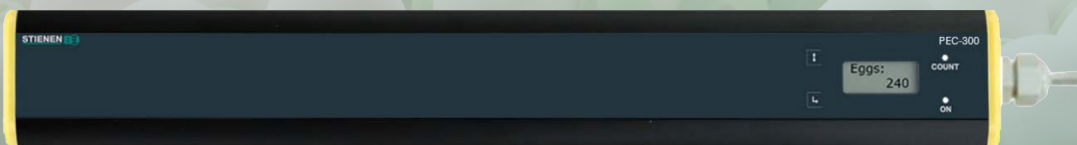
VERSIONS PEC-SERIES



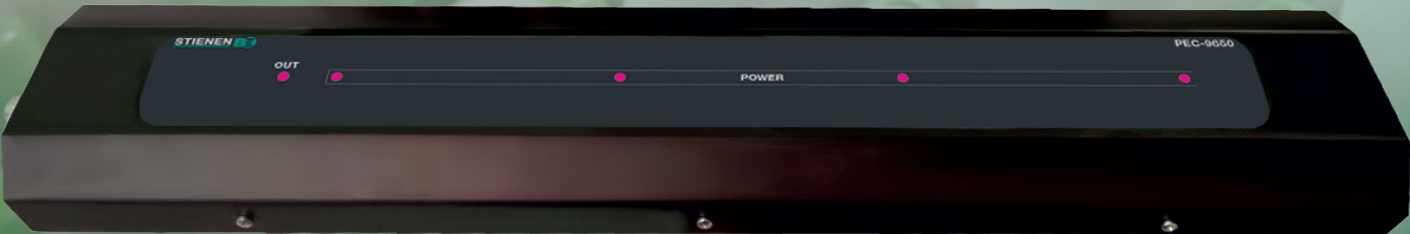
PEC-100



PEC-200



PEC-300



PEC-9650