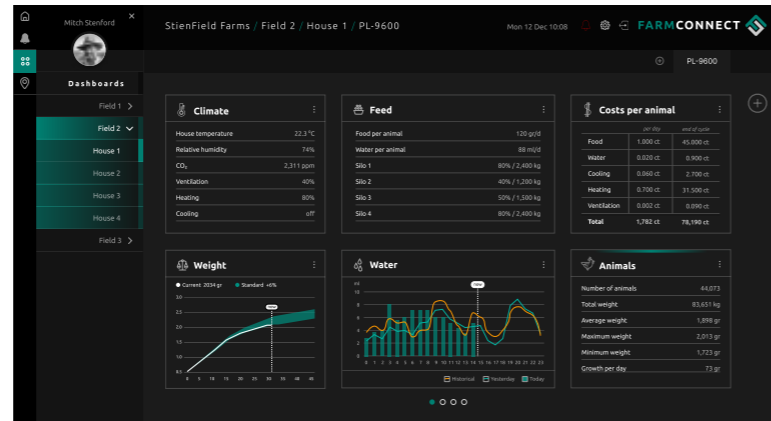


FARMCONNECT (optional)

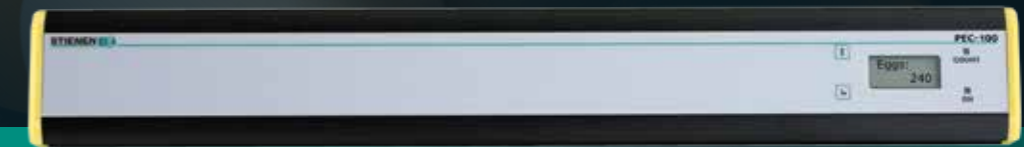
The FarmConnect farm software collects all current and historical data of all control computers on your farm, combines this data, and then presents it in clear overviews, graphs and tables.

FarmConnect gives you access to your farm data. Wherever you are, you are always connected to your company so that you can intervene immediately if necessary.



PEC-SERIES

EGG COUNTER



With intelligent laser sensors

- Innovative laser beam technology
- Extremely precise counting
- No influence of factors on the counting process
- Quick and easy installation thanks to innovative design
- Clear display

STIENEN AGRI AUTOMATION

Stienen BE is a leading family company (1977) which has its roots in livestock farming. It is in our nature to be very close to our end users. We are a global supplier of innovative automation solutions for poultry and pig houses. Our climate solutions, automation systems, management software and the accompanying peripheral equipment are all developed and produced in-house.

Stienen
Mangaanstraat 9 - 6031 RT Nederweert
T +31 (0)495 - 63 29 26
E sales@stienen.com
www.stienen.com



PEC-SERIES

Revolutionary in egg counting!

The PEC eliminates any influence of factors on the count.

The PEC-Eggcounter is suitable for all types of conveyors. The innovative design allows quick and easy installation of the egg counter.

INNOVATIVE LASER

The new PEC-Eggcounters from Stienen are revolutionary in egg counting. Thanks to the innovative laser beam that measures the distance of the eggs, the PEC counts the eggs extremely accurately, regardless of factors such as the colour of the conveyor belt and eggs, the orientation of the eggs on the conveyor belt, any accumulated eggs and the light conditions.

Thanks to the easy calibration option, you do not need to install the egg counter precisely, the installation height may vary from 60 to 75 mm.

The large display of the PEC shows at a glance the following data:

- the total number of eggs
- an easy calibration option

Thanks to the built-in memory, the count will not be lost after an eventual power failure. All these features make the PEC-Eggcounter extremely reliable and user-friendly.

MANAGEMENT PL-9600

This management computer is designed to be the interactive heart of each type of modern poultry farm. This computer collects all data from Stienen systems for life bird weighing, feed weighing, silo weighing, egg counting and heat exchangers and processes this data into comprehensible tables and graphs.

The graphical representation of parameters such as water, temperature, feed, weight, production, relative humidity (RH), carbon dioxide (CO₂) and ammonia (NH₃) provide you all the important management information at a glance.

Thanks to the crisp and modern user interface all vital processes in the poultry house can be controlled, monitored and managed easily.

SPECIFICATIONS PEC-SERIES

GENERAL

Power supply	6-24 VDC / 8-18 VAC
Digital output	Open Drain 24V/0.5A
Puls width	37.5 ms
Housing	IP52
Belt speed of conveyor	0-8m/min
Max. ambient temperature	+40°C
Min. ambient temperature	0°C
Installation height	60-7mm
Accuracy (under normal conditions)	> 99,8%

	PEC-100	PEC-200	PEC-300	PEC-500
Power consumption	max. 0,5W	max. 1,0W	max. 1,5W	max. 2,5W
Dimensions	144 x 75 x 30mm	248 x 75 x 30mm	352 x 75 x 30mm	560 x 75 x 30mm
Weight (without mounting bracket)	328gr.	478gr.	628gr.	928gr.
Scan width	100mm	200mm	300mm	500mm

