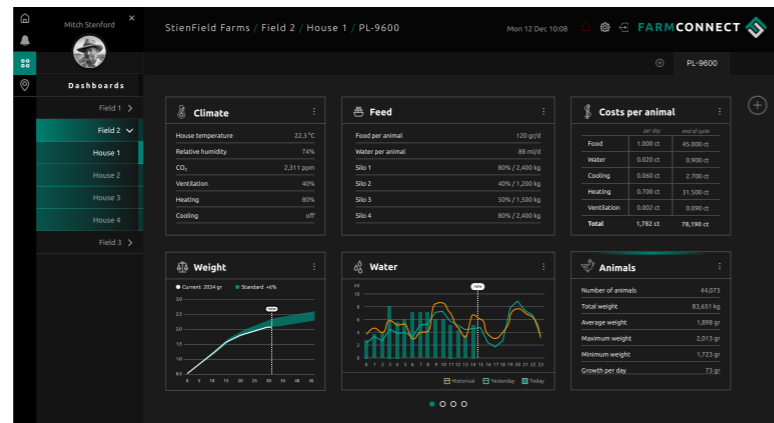


FARMCONNECT (optional)

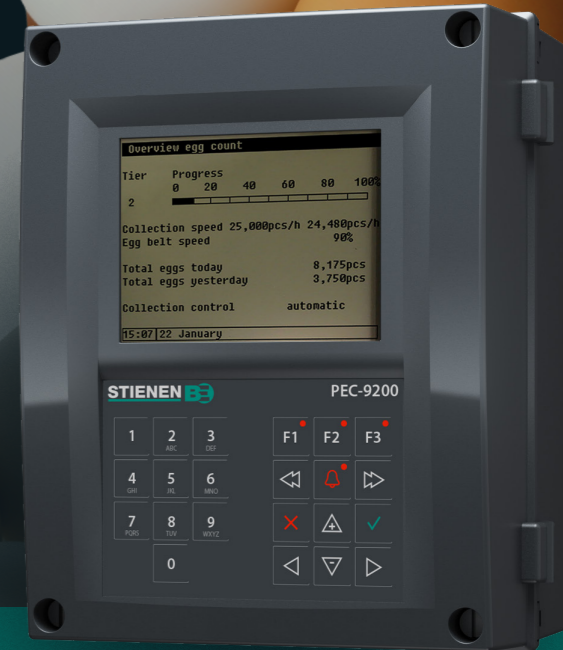
The FarmConnect farm software collects all current and historical data of all control computers on your farm, combines this data, and then presents it in clear overviews, graphs and tables.

FarmConnect gives you access to your farm data. Wherever you are, you are always connected to your company so that you can intervene immediately if necessary.



SMARTCOLLECT

EGGBELT CONTROL



Optimal packing system

- For aviary systems, cages and floor housing
- Optimum and continuous supply of eggs to collection belt and farm packer
- Very high collecting capacity
- Accurate registration of eggs per row and per tier
- Automatic egg belt speed control
- Overview of laying percentages
- Morning control function for better distribution of eggs on the egg belt
- Egg saver control unit

STIENEN AGRI AUTOMATION

Stienen BE is a leading family company (1977) which has its roots in livestock farming. It is in our nature to be very close to our end users. We are a global supplier of innovative automation solutions for poultry and pig houses. Our climate solutions, automation systems, management software and the accompanying peripheral equipment are all developed and produced in-house.

Stienen
Mangaanstraat 9 - 6031 RT Nederweert
T +31 (0)495 - 63 29 26
E sales@stienen.com
www.stienen.com



PEC-9200

A constant supply of eggs is vital in order to utilise your farm's capacity to the full.

The PEC-9200 controls and monitors the process and ensures that the eggs are offered to the farm's capacity with the greatest accuracy and at highest speed possible.

Damage to your eggs is prevented and packing times are minimised to enable you to recoup your investment fast.

OPTIMAL SUPPLY OF EGGS

The PEC-9200 also has an egg counting function. Highly accurate registration of all eggs laid per individual tier and row gives you comprehensive information about your animal's egg production.

The optional reversing detection ensures that any reverse movement of the belt will not result in counting inaccuracies. You control and monitor the entire process for continuity in production performance.

PEC-MASTER

The PEC-Master controls the individual PEC-9200's in order to transport the eggs from the different houses to the farm's capacity in an efficient way. The master knows the packing capacity and ensures the farm's capacity runs continuously at maximum capacity.

MANAGEMENT PL-9600

This management computer is designed to be the interactive heart of each type of modern poultry farm. This computer collects all data from Stienen systems for life bird weighing, feed weighing, silo weighing, egg counting and heat exchangers and processes this data into comprehensible tables and graphs.

The graphical representation of parameters such as water, temperature, feed, weight, production, relative humidity (RH), carbon dioxide (CO2) and ammonia (NH3) provide you all the important management information at a glance.

Thanks to the crisp and modern user interface all vital processes in the poultry house can be controlled, monitored and managed easily.



SPECIFICATIONS PEC-9200

ALGEMEEN

Maximum number of counters	240
Number of tiers	10
Number of rows	24
External alarm inputs	25
Drives a vacuum cleaner	✓
Power supply	230Vac - 50/60Hz
Connection value	20VA
Protection class	IP 54
Dimensions	305 x 232 x 150mm
Housing	ABS
Min. ambient temperature	-5°C
Max. ambient temperature	40°C

UPGRADE OPTIONS

Communication via RS-485 PCB	✓
Functional upgrade using module bus and/or FN bus	✓
Reversing detection	✓

