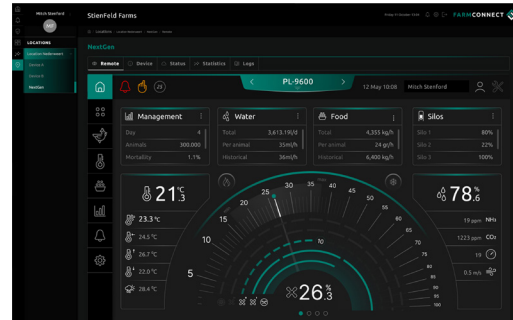


FARMCONNECT (optional)

The FarmConnect farm software collects all current and historical data of all control computers on your farm, combines this data, and then presents it in clear overviews, graphs and tables. FarmConnect gives you access to your farm data. Wherever you are, you are always connected to your farm so that you can intervene immediately if necessary.

FARMREMOTE (optional)

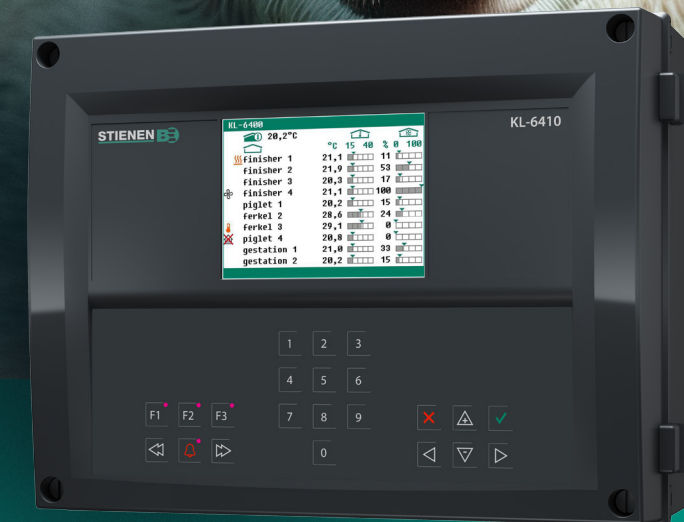
The remote control feature of the KL-6400 enables you to read the current data of your animal house remotely using your smartphone, tablet or PC. You can even operate the KL-6400 from the comfort of your armchair. The Stienen WEB-SEC interface guarantees a secure connection.



KL-6400

CLIMATE & MANAGEMENT

The heart of your farm



- Suitable for complete automation of any type of pig farm
- Graphic display of all important management information
- Clearly arranged "dashboard" with recognizable symbols
- Can be programmed in various languages
- USB port for updating and logging
- Protected communication with FarmConnect and FarmRemote

STIENEN AGRI AUTOMATION

Stienen is a leading family company (1977) which has its roots in livestock farming. It is in our nature to be very close to our end users. We are a global supplier of innovative automation solutions for poultry and pig houses. Our climate solutions, automation systems, management software and the accompanying peripheral equipment are all developed and produced in-house.

Stienen
Mangaanstraat 9 - 6031 RT Nederweert
T +31 (0)495 - 63 29 26
E sales@stienen.com
www.stienen.com

STIENEN 



KL-6400-L-EN25010

STIENEN 

KL-6400

This user-friendly climate and management computer is designed to be the heart of your farm. The KL-6400 controls and manages the quality of life of your animals in order to achieve optimal performance results

The KL-6400 controls all vital processes on your farm!



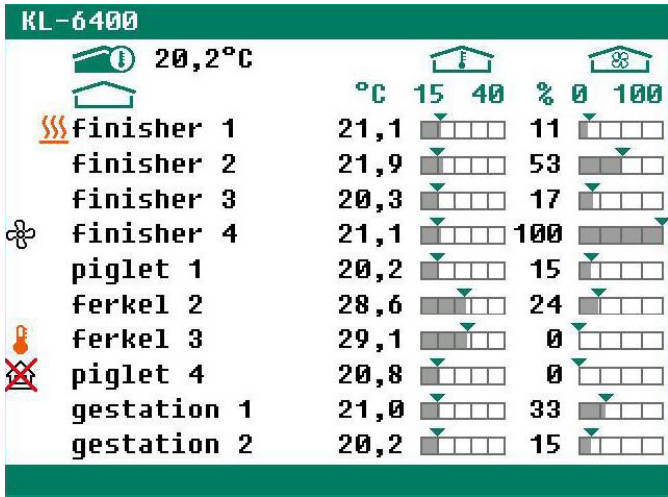
SPECIFICATIONS KL-6400

GENERAL

Power supply	230Vac - 50/60Hz
Load 75	75VA
Protection class	IP-54
Dimensions	370 x 320 x 155mm

EXTENSION OPTIONS

Communication via RS-485-pcb	✓
------------------------------	---



CLIMATE & MANAGEMENT

The computer collects all data from Stienen systems for feed weighing, silo weighing and heat exchangers and processes this data into comprehensible tables and graphs.

The graphical representation of parameters such as temperature, water, feed, weight, production, relative humidity (RH), carbon dioxide (CO2) and ammonia (NH3) provide you all the important management information at a glance.

The KL-6400 is easy to operate using the function keys. Because unused functions are not displayed, the control system is kept easy and transparent.

The KL-6400 series is developed in the daily farm practice, in conjunction with customers for customers.

CONFIGURATIONS

	KL-6410	KL-6405	KL-6402
Number of rooms	10	5	2
Temperature sensor 10k	12	12	10
Input measuring fan	10	5	4
Input 0-10Vdc*	x	x	5
12Vdc/15mA for measuring fan*	10-x	5-x	4
24Vdc/85mA for AQC	10	5	4
Output 0-10Vdc	22	12	12
Relay 230Vac/2A	12	10	-
24Vac 'solid state' outputs	-	-	6
Error contact 24Vdc/2A	1	1	1
Connection communication module bus	2	2	1

* Per room you have the choice between an 0-10Vdc input and 12Vdc output. Up to 10 (KL-6410) or rather 5 (KL-6405) inputs/ouputs can be assigned.

KL-64 LOCAL STATION

(optional)

This local station perfectly matches the KL-6400 series climate computers. It is installed at every room which is a part of a central exhaust system and enables you to read the current room temperature and ventilation at a glance.

Furthermore, the KL-64 informs you about heating and alarm statuses. To clean the room, you turn the control knob to the desired ventilation level.

The KL-64 provides you with up-to-date insight into your separate rooms.

