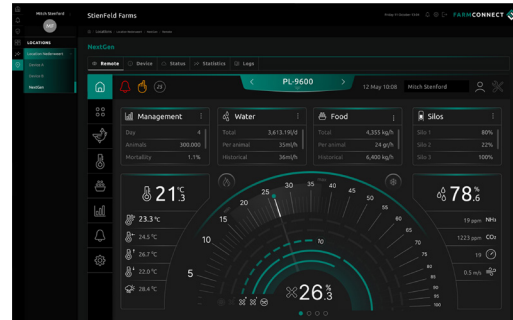


FARMCONNECT (optional)

The FarmConnect farm software collects all current and historical data of all control computers on your farm, combines this data, and then presents it in clear overviews, graphs and tables. FarmConnect gives you access to your farm data. Wherever you are, you are always connected to your farm so that you can intervene immediately if necessary.

FARMREMOTE (optional)

The remote control feature of the KL-6400 enables you to read the current data of your animal house remotely using your smartphone, tablet or PC. You can even operate the KL-6400 from the comfort of your armchair. The Stienen WEB-SEC interface guarantees a secure connection.



KFV-6400

DRY FEED COMPUTER

Accurate valve controlled



STIENEN AGRI AUTOMATION

Stienen is a leading family company (1977) which has its roots in livestock farming. It is in our nature to be very close to our end users. We are a global supplier of innovative automation solutions for poultry and pig houses. Our climate solutions, automation systems, management software and the accompanying peripheral equipment are all developed and produced in-house.

Stienen
Mangaanstraat 9 - 6031 RT Nederweert
T +31 (0)495 - 63 29 26
E sales@stienen.com
www.stienen.com

STIENEN 



KFV-6400-L-EN25060

STIENEN 

- Setting and registering of feeding cycles, feed composition and feed amounts per animal
- Animal management per valve
- Displaying of weighed silos
- Mixing of silo remainders
- USB port for updating
- Secured communication with FarmConnect and/or FarmRemote

KFV-6400

Feed costs are an important factor for any farm.

Linking the KFV-6400 to your dry feed system enables you to efficiently and carefully control this cost item.



ACCURATE DOSING OUT VIA VALVES

The KFV-6400 enables different ingredients to be weighed, optionally mixed and then dosed out carefully via the valves. You can use it to manage stocks in the silos yourself. In this way, you always have a clear overview of the current situation of your feed system.

The KFV-6400 computer enables to use very diverse dry feed concepts. As every pig farm is different, the installer can only activate those control functions that apply to your specific situation. This makes the operation of the KFV-6400 very easy and transparent.



SPECIFICATIONS KFV-6400

STANDARD

0-10V inputs	5
Digital inputs	10
External alarm inputs	10
Relais outputs	30
0-10Vdc outputs	5
Error relay	1

EXTENSION OPTIONS

Communication via RS-485 PCB	✓
Module bus connection for external modules	✓

GENERAL

Power supply	230Vac - 50/60Hz 2× 24Vdc/80mA
Load	55VA
Protection class	IP-54
Dimensions	360 x 320 x 155mm
Housing	ABS
Minimum ambient temperature	-5 °C
Maximum ambient temperature	40 °C



CLIMATE & MANAGEMENT KL-6400

This user-friendly climate and management computer is designed to be the heart of your farm. The KL-6400 controls and manages the quality of life of your animals in order to achieve optimal performance results

The KL-6400 controls all vital processes on your farm!

The computer collects all data from Stienen systems for feed weighing, silo weighing and heat exchangers and processes this data into comprehensible tables and graphs.

The graphical representation of parameters such as temperature, water, feed, weight, production, relative humidity (RH), carbon dioxide (CO2) and ammonia (NH3) provide you all the important management information at a glance.

The KL-6400 is easy to operate using the function keys. Because unused functions are not displayed, the control system is kept easy and transparent.

The KL-6400 series is developed in the daily farm practice, in conjunction with customers for customers.

FUNCTIONALITIES

Weighing and mixing of max. 8 ingredients from max. 16 silos
16 vibrators (against bridge building)
10 feed lines consisting of max. 16 segments
1 weigher/mixer
Programmable filling sequence
The feed system can be controlled in four ways <ul style="list-style-type: none">locally by means of a feed timer on a feed linemanuallyby a central fill timervia feed sensors
Setting of up to 10 recepies
Controls up to 250 valves in more rooms
12 universal timers and 1 fill timer
Hammer mill control
Compressor control
Can be combined with a PFB-SV (switch valve) for simultaneously filling valves in several feeding lines