

## OPTIMUM DATA SECURITY

FarmConnect has been developed and set up according to the highest cybercrime security standards. This optimally protects your system and data against any malicious external influences.

## ADDED VALUE OF DATA EXCHANGE

Monitoring your animals' weight, and thus their growth, is often very important. FarmConnect lets you determine the optimum delivery weight and enables you to take action immediately if any animals stop growing or lose weight. An animal's weight is also an indication of its health status. You can link animal weight to feed, water and climate data so that you always have a perfect view of how your animals are doing.



## STIENEN AGRI AUTOMATION

Stienen is a leading family company (1977) which has its roots in livestock farming. It is in our nature to be very close to our end users. We are a global supplier of innovative automation solutions for poultry and pig houses. Our climate solutions, automation systems, management software and the accompanying peripheral equipment are all developed and produced in-house.

Stienen  
Mangaanstraat 9 - 6031 RT Nederweert  
T +31 (0)495 - 63 29 26  
E [sales@stienen.com](mailto:sales@stienen.com)  
[www.stienen.com](http://www.stienen.com)

**STIENEN** 

## FARMCONNECT

# NEXT GEN



## Cloud computing platform

- Bediening en uitlezing op afstand, 24/7 en overal ter wereld
- Duidelijke overzichten per stal, per bedrijf en per ronde
- Eenvoudige data-uitwisseling
- Optimale data-beveiliging



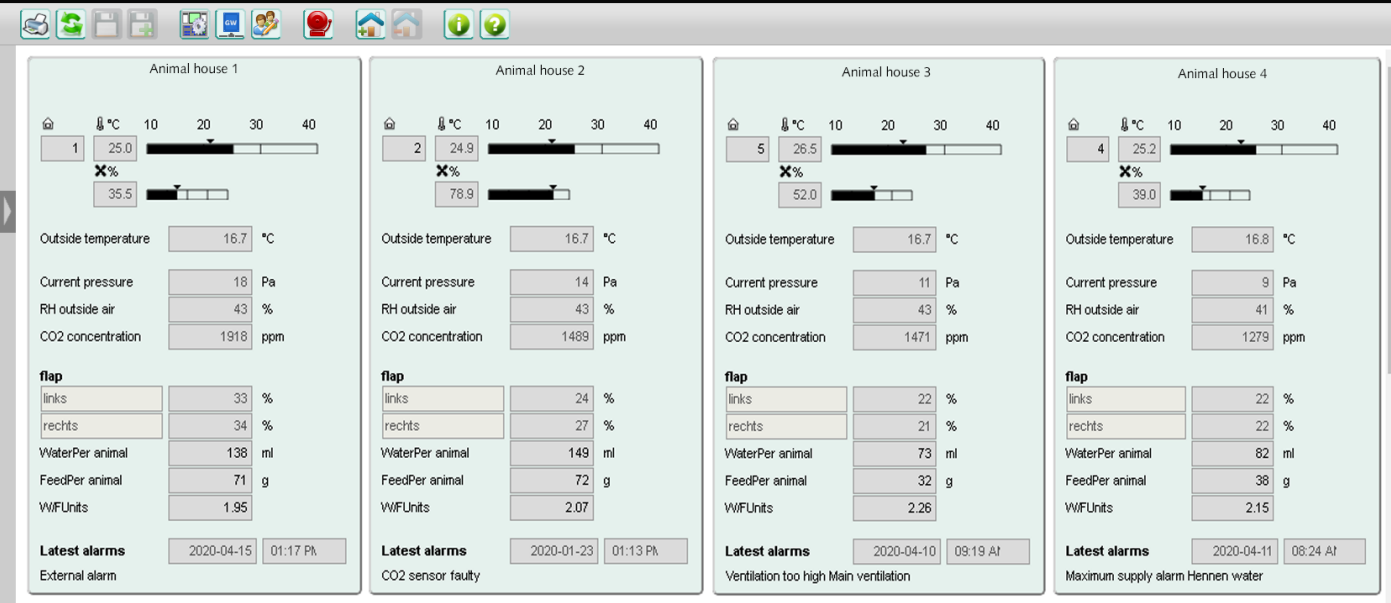
**STIENEN** 



# FARMCONNECT VIEW. COMPARE. ANALYSE. MANAGE

FarmConnect is Stienen's management program, connecting you to all the Stienen management computers in your company day and night. The program provides you with an up-to-date view of your animals' performance. You can study your animals' data at leisure via internet and compare it to the results of other houses or previous cycles.

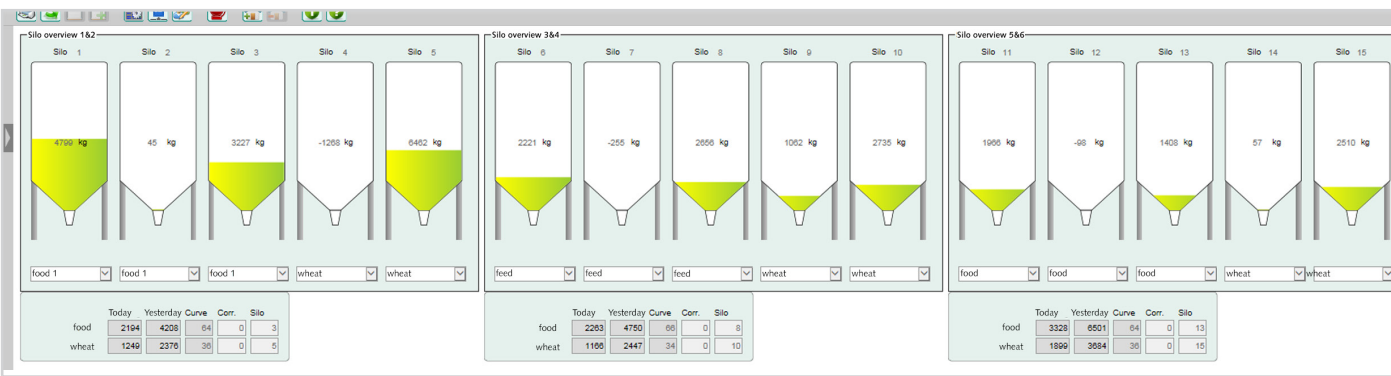
You can look, compare, analyse and correct where necessary. These performance dashboards are default features of FarmConnect. However, they can be customised to suit your needs and give you a real-time view of your entire farm, anywhere and at any time, so that nothing is left to chance.



# WATER AND FEED

FarmConnect can assist you with your feed strategy and gives you information that can help you achieve improved results, such as lower feed costs and better animal performance. The water-to-feed ratio is an important indicator of your animals' health.

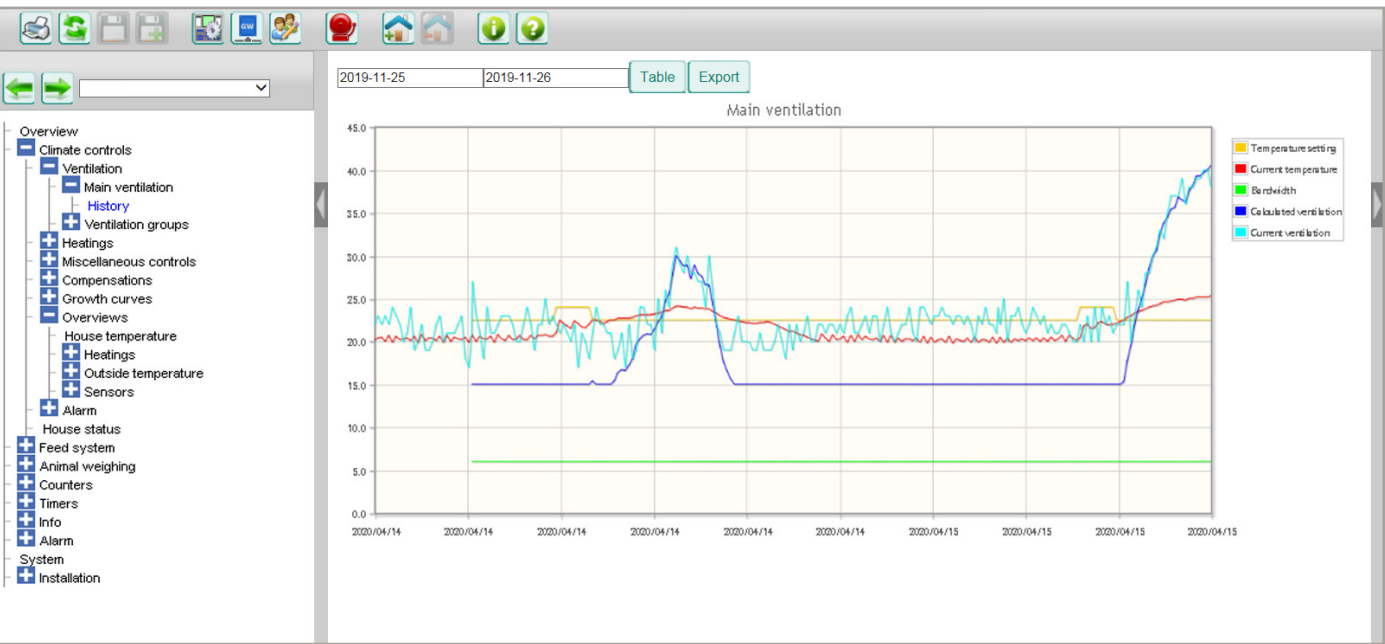
Here, any differences in water and feed consumption are immediately visible, enabling you take action in good time and before any defects or deficiencies can cause any negative consequences.



# CLIMATE

The new generation of management computers controls the climate in animal houses and generates and records important data, including several climate variables, such as ventilation, temperature, relative humidity and CO2. FarmConnect collects all current and historical data from the management computers and presents them in easy to understand tables and graphs.

One screen will show you all the parameters that concern a specific control aspect. Since a good climate should lead to good technical results, our management computers record several different types of data, including the use of feed and water, weight increase, mortality and uniformity.



# ANIMAL WEIGHT

Monitoring your animals' weight, and thus their growth, is often very important. FarmConnect lets you determine the optimum delivery weight and enables you to take action immediately if any animals stop growing or lose weight. An animal's weight is also an indication of its health status. You can link animal weight to feed, water and climate data so that you always have a perfect view of how your animals are doing.

If you generate data from different animal houses, you can compare the results of the different houses after each cycle and learn from them. Animal health translates into good technical results. An animal's daily growth and its feed and water intake are important parameters enabling any user to take the necessary action in good time.

