

ELM

Winch motor for controlling
air inlets

- Robust 230V motor
- Self-locking drive
- Low noise
- Maintenance-free



ELM winch motor

geared motor with limit switch

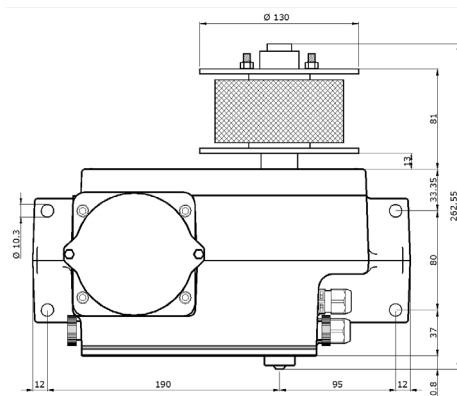
The ELM motor has been specially developed to control various types of air inlets in intensive livestock buildings. The winch motor is fitted with a 230V motor with a tensile force of 335 to 800 kg, depending on the model. The ELM is available in four different versions:

- ELM-150V-TB Valve control (*with pull strap*)
- ELM-150C Curtain control
- ELM-100-2A Gear rack drive (*2-shaft*)
- ELM-250-2A Gear rack drive (*2-shaft*)

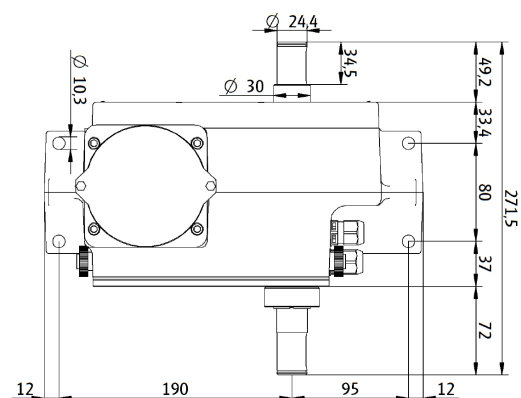
Technical specifications

	ELM-150V-TB	ELM-150C	ELM-100-2A (2-shaft)	ELM-250-2A (2-shaft)
Drive	valve control	curtain control	gear rack drive	gear rack drive
Supply voltage	230 Vac, 50 Hz	230 Vac, 50 Hz	230 Vac, 50 Hz	230 Vac, 50 Hz
Max. current	0.7 A	0.7 A	1.1 A	1.0 A
Weight	12.5 kg	12.5 kg	11.0 kg	13.0 kg
Shaft torque	150 Nm	150 Nm	100 Nm	250 Nm
Max. tensile force	500 kg	500 kg	335 kg	800 kg
Speed	1 rpm	1 rpm	2,5 rpm	1 rpm
Limit switches	max. 6 rev.	max. 12 rev.	max. 18 rev.	max. 6 rev.
Max. duty cycle	10 minutes	10 minutes	20 minutes	20 minutes
Feedback potmeter	10 kΩ ±20%	10 kΩ ±20%	10 kΩ ±20%	10 kΩ ±20%
Connection cable length	1.6 m	1.6 m	1.6 m	1.6 m
Protection class	IP 54	IP 54	IP 54	IP 54
Ambient temperature	-5 °C to +52 °C	-5 °C to +52 °C	-15° C to +60 °C	-15 °C to +60 °C
Wind-up length Ø4 mm cable resp. revolutions of motor shaft				
gearwheel, 1 thread	58,0-83,0 cm	63-218 cm	3-9.5 rev.	3-9.5 rev.
gearwheel, 2 threads	26,5-83,0 cm	36-132 cm	-	-
gearwheel, 3 threads	17,0-83,0 cm	27-81 cm	1-5 rev.	1-5 rev.
gearwheel, 5 threads	8,0-49,0 cm	18-50 cm	1-3.5 rev.	1-3.5 rev.

Dimensions ELM-150V-TB / ELM-150C



Dimensions ELM-100-2A / ELM-250-2A



Stienen BE, Agri Automation

Stienen BE is a leading family company (1977) which has its roots in livestock farming. It is in our nature to be very close to our end users. We are a global supplier of innovative automation solutions for poultry and pig houses. Our climate solutions, automation systems, management software and the accompanying peripheral equipment are all developed and produced in-house.