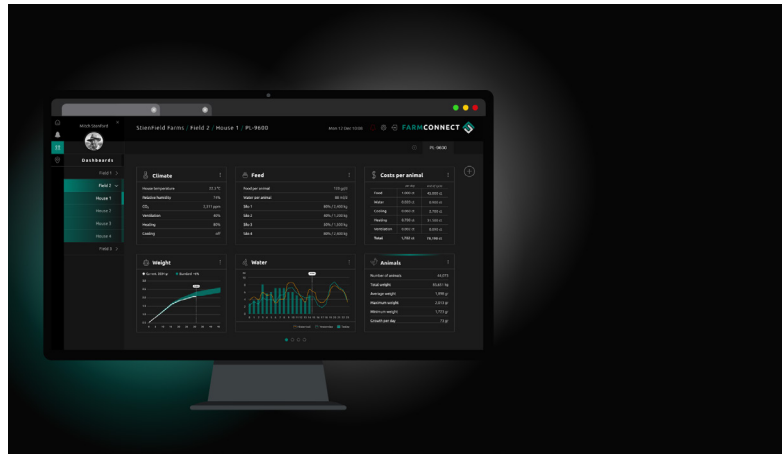


## FARMCONNECT

The FarmConnect farm software collects all current and historical data of all control computers on your farm, combines this data, and then presents it in clear overviews, graphs and tables.

FarmConnect gives you access to your farm data. Wherever you are, you are always connected to your company so that you can intervene immediately if necessary.



## CBA-2000

# USEFULL AND SMART



## Easy and efficient controller

- Available with 0-10V, 6A or 12A fan control
- One cooling and two heating control functions
- Ventilation can be controlled in two groups
- Built-in alarm function
- Outside temperature measurement with alarm limit compensation
- Displays the current ventilation and temperature
- Can be combined with AQC air control units, Ecovent and central exhaust
- Secure communication with FarmConnect

## STIENEN AGRI AUTOMATION

Stienen is a leading family company (1977) which has its roots in livestock farming. It is in our nature to be very close to our end users. We are a global supplier of innovative automation solutions for poultry and pig houses. Our climate solutions, automation systems, management software and the accompanying peripheral equipment are all developed and produced in-house.

Stienen  
Mangaanstraat 9 - 6031 RT Nederweert  
T +31 (0)495 - 63 29 26  
E sales@stienen.com  
www.stienen.com

**STIENEN B3**

**STIENEN B3**

CBA-2000-EN25010



# CBA-2000

Efficient climate control for an individual room with a direct air inlet control.



## A GOOD CLIMATE WITH CBA-2000

A good climate is essential for the performance and health of your animals.

The CBA-2000 features ventilation, heating, cooling and air inlet controls to create a good living environment for your animals.

The two displays keep you up to date with the current ventilation and temperature in the room.

The temperature compensation control function (optional) monitors the room temperature and activates cooling when necessary.

If the temperature ever rises above the set limits, an alarm message is generated.

Various fans can be controlled in two groups. If the ventilation demand exceeds a certain level, the second group of fans will automatically be activated.

To let the climate ‘grow’ along with your animals, you can use growth curves (four breakpoints)to program the climate control process.

This lets you efficiently and economically control your animals' primary requirements.

## CBA-2600 HOOFDSTATION (optional)

This main station for CBA-2600 controls can only combined with climate controls of the CBA series and can be used as part of a central exhaust system, Ecovent system or central heating.

In the event of a central exhaust system, ventilation in the houses is controlled by means of AQC air control units.

The local climate controls in the individual rooms communicate their ventilation demands to the CBA-2600 and this main station then centrally controls ventilation for this group of rooms.

## AQC (optional)

The Stienen AQC air control unit is characterized by the excellent aerodynamic properties of the measuring fan and the control flap (double or quadruple) .

In combination with the CBA-2000 control, the AQC can be used as a measuring and control unit in a central exhaust system and as a measure and control unit under ventilation ducts.



# SPECIFICATION CBA-2000

|                         | CBA-2000        | CBA-2006        | CBA-2012        |
|-------------------------|-----------------|-----------------|-----------------|
| Relay outputs 230Vac/2A | 2               | 2               | 2               |
| Outputs 0-10Vdc         | 3               | 2               | 2               |
| Error relay 24Vac/2A    | 1               | 1               | 1               |
| Supply voltage 24Vdc    | 1               | 1               | 1               |
| Temperature sensors     | 2               | 2               | 2               |
| Measuring fan input     | 1               | 1               | 1               |
| Fan output              | 0-10Vdc         | 230Vac/6A       | 230Vac/12A      |
| Load                    | 25VA            | 1,4 kVA         | 2,8 kVA         |
| Dimensions              | 220 x 225 x 120 | 315 x 235 x 150 | 300 x 245 x 180 |

## GENERAL

|                                   |                  |
|-----------------------------------|------------------|
| Supply voltage                    | 230Vac - 50/60Hz |
| Protection class                  | IP 54            |
| Housing                           | ABS              |
| Min. ambient temperature          | -5°C             |
| Max. ambient temperature          | 40°C             |
| Optional temperature compensation | V                |

## EXTENSION OPTIONS

|                                |   |
|--------------------------------|---|
| Communication via RS-485-print | V |
|--------------------------------|---|