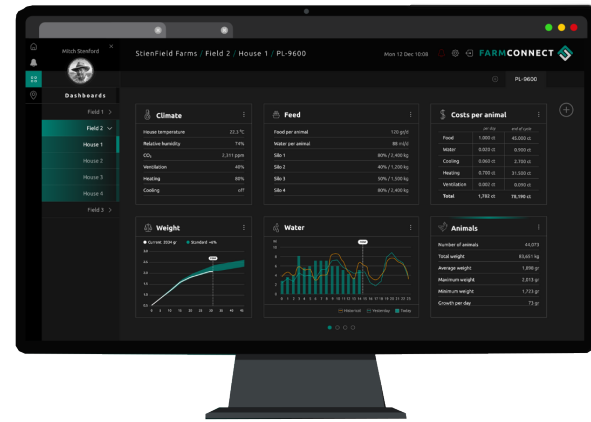


FARMCONNECT (optional)

The FarmConnect farm software collects all current and historical data of all control computers on your farm, combines this data, and then presents it in clear overviews, graphs and tables.

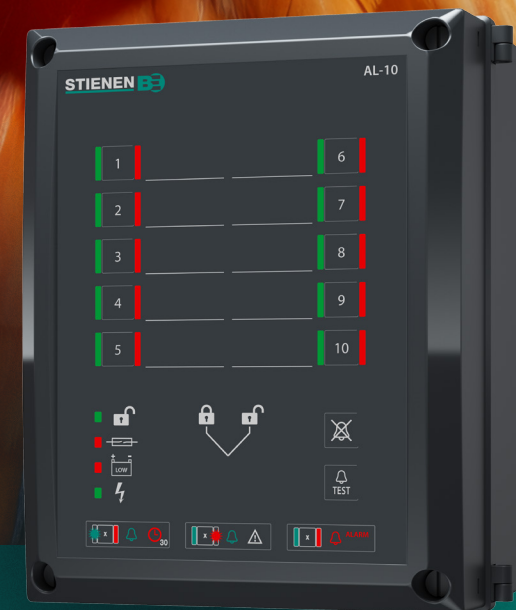
FarmConnect gives you access to your farm data. Wherever you are, you are always connected to your company so that you can intervene immediately if necessary.



AL-10

ALARM DEVICE

Always in control. Everywhere.



STIENEN AGRI AUTOMATION

Stienen is a leading family company (1977) which has its roots in livestock farming. It is in our nature to be very close to our end users. We are a global supplier of innovative automation solutions for poultry and pig houses. Our climate solutions, automation systems, management software and the accompanying peripheral equipment are all developed and produced in-house.

Stienen
Mangaanstraat 9 - 6031 RT Nederweert
T +31 (0)495 - 63 29 26
E sales@stienen.com
www.stienen.com

STIENEN 



AL-10-L-EN25041

STIENEN 

- Clear displaying of activated inputs
- Independant operation of alarm contacts
- Optional alarm key switch
- Internal battery for constant contact monitoring
- Protected communication with FarmConnect and FarmRemote

Constant monitoring

The internal battery powers the AL-10 if the mains power is down, thus guaranteeing constant monitoring.



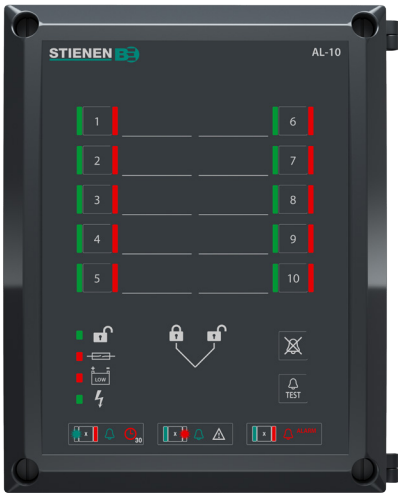
AL-10

This alarm controller takes its name from its ten independent alarm groups. Every alarm input has an alarm output linked to it, enabling alarm handling priorities to be programmed. The keys and the corresponding signal LEDs provide you with a straightforward and clear indication of where a problem was detected.

The AL-10 communicates the alarm and the corresponding location to either your siren and/or phone output (as selected by you), enabling you to take action as required.

The alarm inputs can be switched on/off individually and have a default retard function of 30 minutes. This retard function can be activated if the alarm is reported via your phone.

You can also program a dialler delay for every individual input. A key switch is optionally available to prevent unauthorised deactivation of an alarm.



SIREN

To ensure that the alarm is always heard, this tight and waterproof siren with its sound level between 117dB and 127dB and flashing light signal generates highly noticeable alarm signals.

The AL-10 enables you to deviate from the default siren pattern and set a pattern of your own preference. This controller also has a night-time siren setting, where the siren will not be activated during the nighttime period as programmed by you. Of course, the dialler will then still relay the signal to your phone.



FARMREMOTE (optional)

The remote control feature of the AL-10 enables you to read the current data of your animal house remotely using your smartphone, tablet or PC. You can even operate the AL-10 from the comfort of your armchair. The Stienen WEB-SEC interface guarantees a secure connection.

SPECIFICATIONS AL-10

GENERAL

Supply voltage	230Vac - 50/60Hz
Connected load	15VA
Dimensions	300x230x120
ABS housing	✓
Protection class	IP 20
Min. ambient temperature	-5°C
Max. ambient temperature	20°C

INPUTS

Individually programmable alarm inputs	10
Alarm retard input	1

OUTPUTS

Individually programmable alarm outputs per input, 24Vdc/0.5A	10
Error relay 24Vdc/0.5A (dialler)	1
Siren output 12Vdc/0.5A	1

OPTIONS

Key switch	✓
Communication via RS-485 PCB	✓