

NEW RELEASE

PL-9300

PL-9400

PL-9500

series



KEY POINTS NEW RELEASE

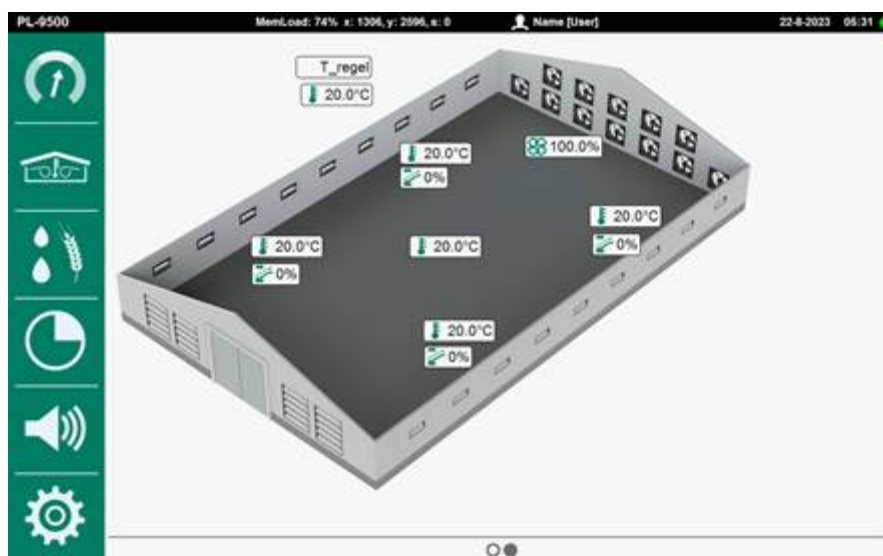
Update is available for the PL-9300 / PL-9400 / PL-9500 series.

1. Enhanced RH, CO2 and NH3 compensation

- 1a. In the new software version, the PL computer increases ventilation when the CO2, NH3 or RH level is too high. However, this increase (factor) is automatically reduced as soon as the house temperature becomes too low. Advantage of this is that there is increased ventilation until it becomes critical for the house temperature. In other words, a balanced compensation.

2. New house overview with interactive reference function

- 2a. When clicking on a value in the overview below (for example on the RH sensor), you will be referred directly to the sensor settings concerned;
- 2b. The result is an easier and faster navigation.



3. Pulsed heating

- 3a. Through this revamped control, the heating is pulse-controlled;
- 3b. This is particularly interesting for hot-water heating where a fan behind the heater block should be driven in pulsed mode.

4. Water counter growth curve

- 4a. A new screen has been added where a min-max alarm can be set for water consumption.
- 4b. These alarm limits can be set based on a growth curve and so they automatically grow accordingly with the chickens.
- 4c. Very interesting for broilers and rearing.

5. Mortality categories

- 5a. Now 10 different categories can be configured to register/track mortality among chickens.

6. ECO-STEP for step fans

- 6a. With the new software, switched fans (on/off) can be limited up to a certain % (e.g. 60%). This offers the advantage of energy savings and a better transition between steps.
- 6b. This leads to lower energy consumption (= money) and to a longer lifetime of the fans.

7. Light clocks

- 7a. The new software version enables to add a growth curve for light control that controls the intensity of light (Lux) based on a growth curve. This can be configured per day.

8. General clocks / timers

- 8a. From now on up to 24 timers / schedules can be configured per day.
 - Time schedules (feed/water/light)
 - Lighting schedules
 - Dosing schedules
- 8b. Up to 24 growth curve points (in days) can be entered.
- 8c. This is ideal for rearing, breeding (PS) or broiler farms.

9. Alarms

- 9a. As of now 20 external alarms can be configured.
- 9b. Alarms are communicated via 485 communication for a detailed event log.

10. Renewed current ventilation overview

- 10a. In the new version, the current ventilation appears in the main overview in % of the total capacity installed.
- 10b. This offers a better and more direct overview and insight.

11. Improved pressure control

- 11a. 2 additional adjustable pressure measurements up to 1000 Pa have been added.
- 11b. Perfectly suitable for protecting heat exchangers and or manure dryers.

VERY IMPORTANT TO OUR INSTALLERS

1. This update only works when the CPU board is of generation RT-CPU_DEK03 or higher

- 1a. If the CPU board is older than the above-mentioned generation of computers from 2017 or earlier, the computer crashes because of insufficient memory.

2. To be able to visualize all functionalities in FarmConnect, the server version must be at least [2.3.2](#)

- 2a. All servers managed by Stienen are up to date.
- 2b. Customers with their own servers will have to check the software version themselves.